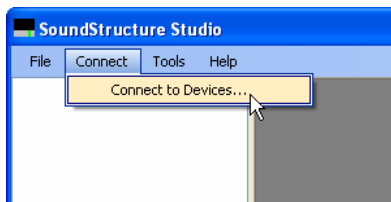


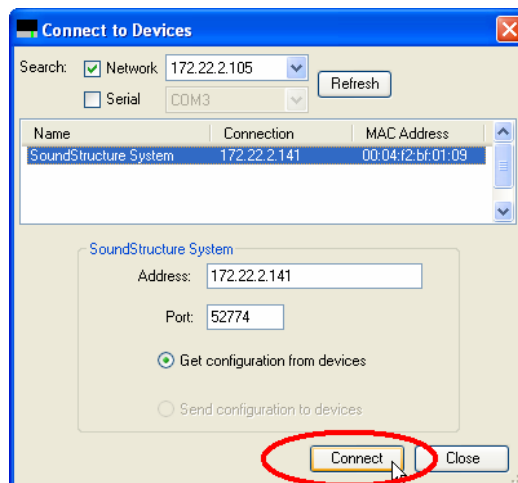
# Instructions for Updating SoundStructure Firmware

The total time to update the SoundStructure firmware should be less than 10 minutes.

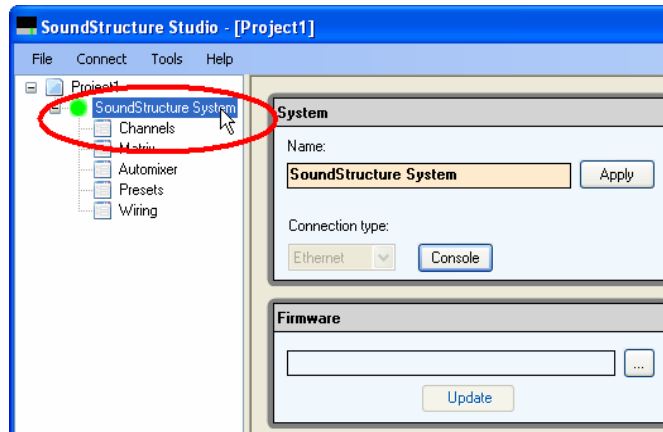
1. Copy the new firmware file (firmware-1.1.1.bin in this example) onto your Windows Desktop.
2. If multiple computers are connected to the device with SoundStructure Studio or a control system is connected, close all other SoundStructure Studio connections and unplug the control system from the device.
3. Connect to the SoundStructure device with a wired Ethernet connection from a computer by running SoundStructure Studio and selecting Connect → Connect to Devices



4. Select the device to update and press 'Connect'

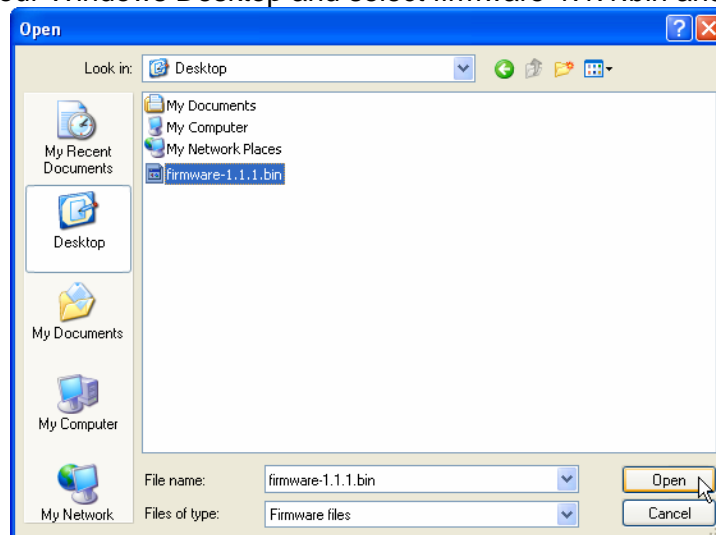


5. Once the settings have been transferred to the SoundStructure Studio software, left click on the Project name to bring up the Firmware option if it isn't already visible.

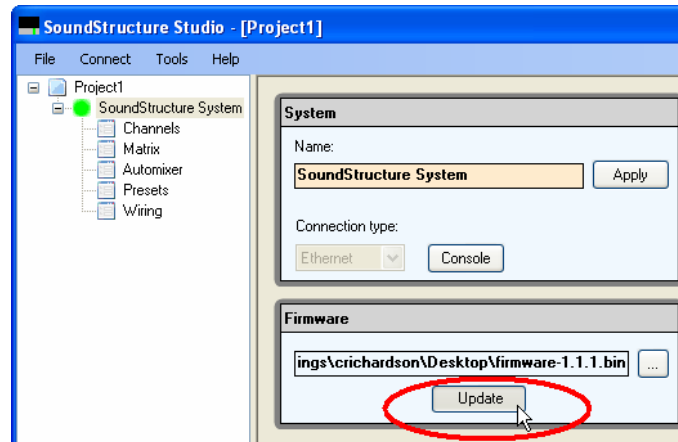


6. And click on the '...' button

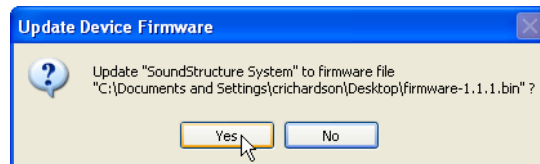
7. Navigate to your Windows Desktop and select firmware-1.1.1.bin and click Open.



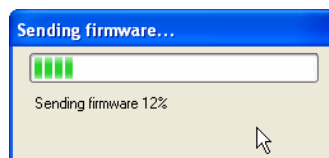
8. Then press the Update button within SoundStructure Studio



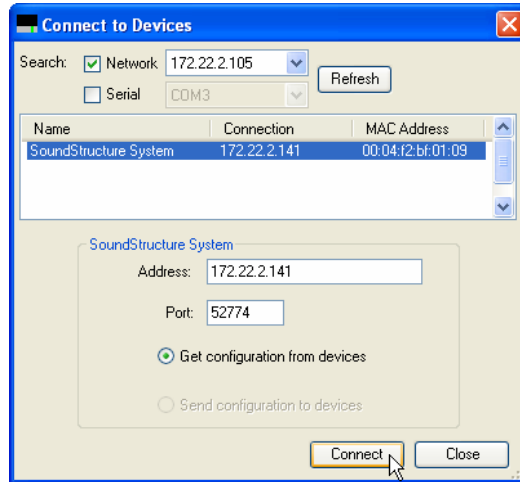
9. At the Update Device Firmware confirmation prompt, select Yes if the proper firmware file has been selected. Do not disconnect power from the device while the firmware is being updated.



10. The system will show a progress bar and will hesitate at 12 % - this is normal.



11. Once the firmware has been updated, the system will automatically reboot and after the device has finished booting (front panel light turns solid green), it will be possible to reconnect to the device. Connect to the SoundStructure device as described in Step 4. You may need to click the Refresh button to find the device.



12. Reconnect the control system if it was disconnected prior to the firmware update.

13. Once connected, the firmware version may be confirmed on the Wiring page as shown below.

Device Information	
Device type:	c16
Bus ID:	1
Device status:	ok
Ethernet MAC:	00:04:f2:bf:01:62
Plugin card:	dual_pstn
Hardware Revision:	A
Hardware ECC:	1
Bootloader Version:	1.2.2
Firmware Version:	1.1.1
Temperature 1 (°C):	41.0
Temperature 2 (°C):	55.7
Temperature 3 (°C):	31.7
Phantom P/S 1 (V):	47.7
Phantom P/S 2 (V):	47.1
Phantom P/S 3 (V):	48.1
Phantom P/S 4 (V):	47.3
+15V P/S (V):	14.7
-15V P/S (V):	-14.7
ConferenceLink P/S (V):	49.1
HDX Table Mics:	3
HDX Ceiling Mics:	0
HDX Codecs:	0

The firmware has been successfully updated.