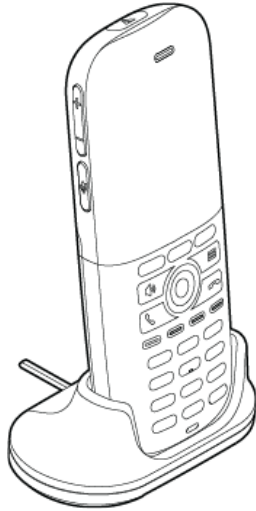


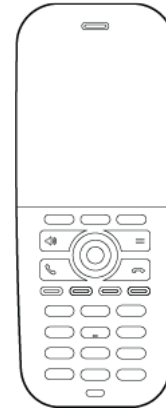


POLY ROVE 30/40 DECT IP PHONE SETUP SHEET

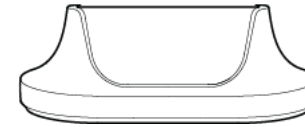


PACKAGE CONTENTS

Wireless Handset



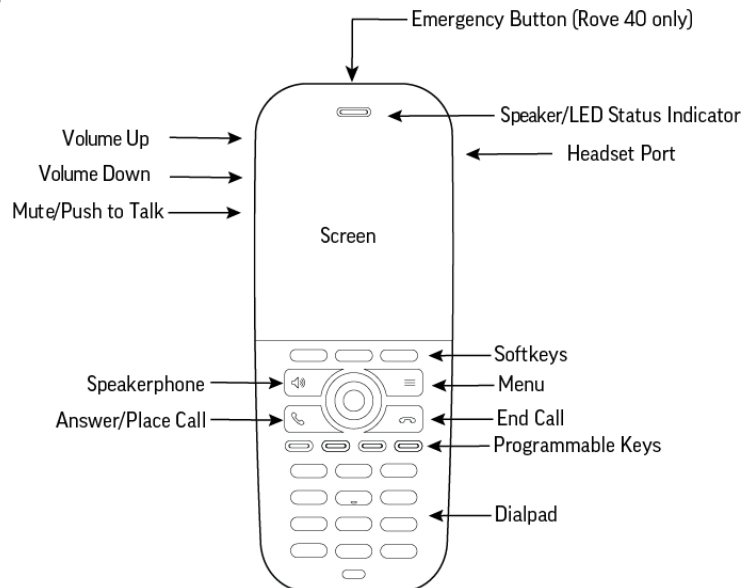
Charging Cradle



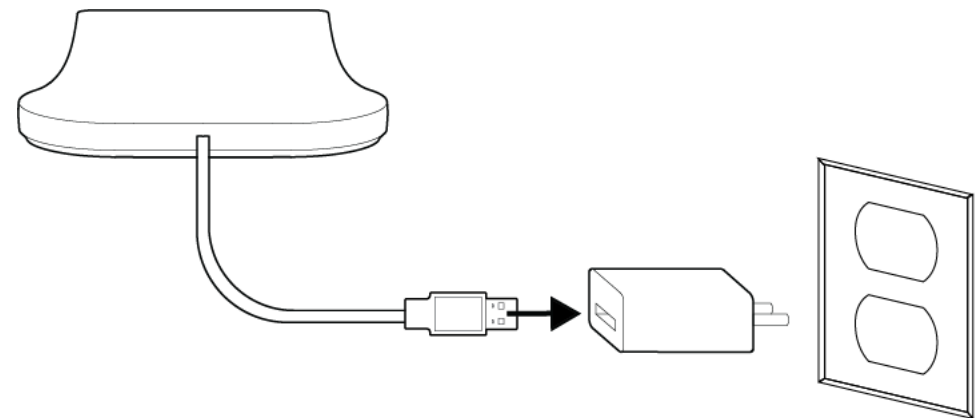
5V USB Power Adapter (Varies by Country)

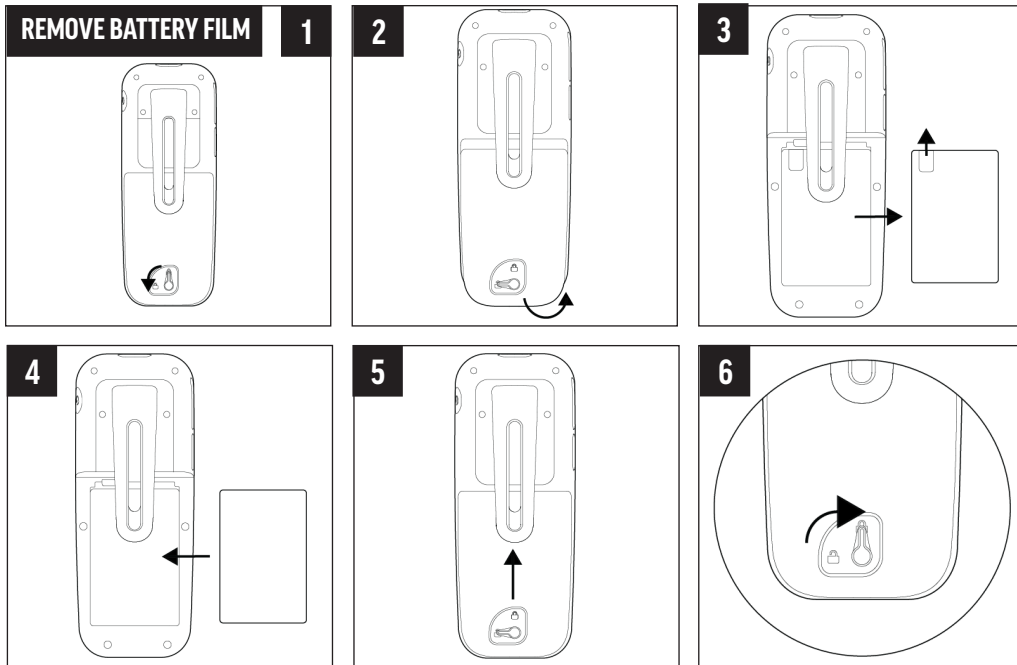


FEATURES

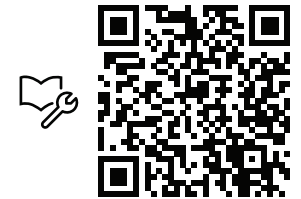


CONNECT POWER





BY USING THIS PRODUCT, YOU ARE AGREEING TO THE TERMS OF THE END USER LICENSE AGREEMENT (EULA) AT: <http://documents.polycom.com/indexes/licenses>. IF YOU DO NOT AGREE TO THE TERMS OF THE EULA, DO NOT USE THE PRODUCT, AND YOU MAY RETURN IT IN THE ORIGINAL PACKAGING TO THE SELLER FROM WHOM YOU PURCHASED THE PRODUCT. Refer to the Limited Warranty section of the Product Warranty Guide found under Services at <http://support.polycom.com/>



support.polycom.com/voice



© 2021 Plantronics, Inc. All rights reserved. Poly, the propeller design, and the Poly logo are trademarks of Plantronics, Inc. All other trademarks are the property of their respective owners.
Contact Information:
Contact your authorized reseller for assistance.
www.poly.com
Plantronics, Inc. 345 Encinal Street Santa Cruz, California 95060



3725-34010-001A