



GETTING STARTED GUIDE

10.0.0.3 | May 2019 | 3725-76311-001R2

# **Polycom RealPresence<sup>®</sup> Distributed Media Application<sup>™</sup> (DMA<sup>®</sup>) System**



Copyright© 2019, Polycom, Inc. All rights reserved. No part of this document may be reproduced, translated into another language or format, or transmitted in any form or by any means, electronic or mechanical, for any purpose, without the express written permission of Polycom, Inc.

6001 America Center Drive  
San Jose, CA 95002  
USA

**Trademarks** Polycom®, the Polycom logo and the names and marks associated with Polycom products are trademarks and/or service marks of Polycom, Inc. and are registered and/or common law marks in the United States and various other countries.



All other trademarks are property of their respective owners. No portion hereof may be reproduced or transmitted in any form or by any means, for any purpose other than the recipient's personal use, without the express written permission of Polycom.

**End User License Agreement** By installing, copying, or otherwise using this product, you acknowledge that you have read, understand and agree to be bound by the terms and conditions of the End User License Agreement for this product. The EULA for this product is available on the Polycom Support page for the product.

**Patent Information** The accompanying product may be protected by one or more U.S. and foreign patents and/or pending patent applications held by Polycom, Inc.

**Open Source Software Used in this Product** This product may contain open source software. You may receive the open source software from Polycom up to three (3) years after the distribution date of the applicable product or software at a charge not greater than the cost to Polycom of shipping or distributing the software to you. To receive software information, as well as the open source software code used in this product, contact Polycom by email at [OpenSourceVideo@polycom.com](mailto:OpenSourceVideo@polycom.com) (for video products) or [OpenSourceVoice@polycom.com](mailto:OpenSourceVoice@polycom.com) (for voice products).

**Disclaimer** While Polycom uses reasonable efforts to include accurate and up-to-date information in this document, Polycom makes no warranties or representations as to its accuracy. Polycom assumes no liability or responsibility for any typographical or other errors or omissions in the content of this document.

**Limitation of Liability** Polycom and/or its respective suppliers make no representations about the suitability of the information contained in this document for any purpose. Information is provided "as is" without warranty of any kind and is subject to change without notice. The entire risk arising out of its use remains with the recipient. In no event shall Polycom and/or its respective suppliers be liable for any direct, consequential, incidental, special, punitive or other damages whatsoever (including without limitation, damages for loss of business profits, business interruption, or loss of business information), even if Polycom has been advised of the possibility of such damages.

**Customer Feedback** We are striving to improve our documentation quality and we appreciate your feedback. Email your opinions and comments to [DocumentationFeedback@polycom.com](mailto:DocumentationFeedback@polycom.com).

**Polycom Support** Visit the [Polycom Support Center](#) for End User License Agreements, software downloads, product documents, product licenses, troubleshooting tips, service requests, and more.

# Contents

---

<b>About This Guide</b> .....	<b>2</b>
RealPresence DMA System Editions.....	2
Audience, Purpose and Required Skills.....	2
Get Help.....	2
Polycom and Partner Resources.....	3
The Polycom Community.....	3
<b>Preparing for System Installation</b> .....	<b>4</b>
Prepare Client Systems.....	4
Prepare the USB Flash Drive (Appliance Edition Only).....	4
<b>System Installation</b> .....	<b>7</b>
Virtual Edition Installation.....	7
Host Installation Guidelines for Virtual Editions.....	7
Install the Virtual Edition Software.....	8
Appliance Edition Installation.....	9
Shipment Contents.....	9
Unpack and Install the Hardware.....	10
Create a DVD for the System Software.....	12
Install the System Software.....	12
<b>Initial Configuration</b> .....	<b>14</b>
RealPresence DMA System Configurations.....	14
Configure Initial Settings for the Virtual Edition.....	14
Configure Initial Settings for the Appliance Edition.....	16
Configure Initial Settings Without the USB Flash Drive.....	17
System Licenses.....	18
License Your System with RealPresence Resource Manager.....	18
License Your System with a License File.....	19
Additional Configuration.....	19

# About This Guide

---

## Topics:

- [RealPresence DMA System Editions](#)
- [Audience, Purpose and Required Skills](#)
- [Get Help](#)

This guide provides the first time setup information that you need to configure a RealPresence DMA system. Once you've completed first time setup, see the *Polycom RealPresence DMA System Operations Guide* for additional configuration and customization tasks you can perform.

## RealPresence DMA System Editions

The RealPresence DMA system is available in an Appliance Edition (for use with a Polycom Rack Server) and a Virtual Edition (packaged as software only).

Most of the functionality described in this document applies to both editions, and so the product references are general—that is, the RealPresence DMA system. However, when information applies to a specific edition, the reference will be specific—that is, RealPresence DMA, Virtual Edition or RealPresence DMA, Appliance Edition.

## Audience, Purpose and Required Skills

This document is written for a technical audience. You must know or have the following:

- Basic computer and network system administration skills
- Virtual machine (VM) concepts
- Network configuration, including IP addressing, subnets, gateways, domains, DNS, time servers, and possibly network routing
- The deployment plan for the RealPresence DMA system being installed and the video conferencing/collaboration network of which it will be a part

This guide assumes that you are starting with a RealPresence DMA system that has never been previously configured.

If necessary, obtain the assistance of the appropriate IT or network administration personnel before proceeding.

## Get Help

For more information about installing, configuring, and administering Polycom products, refer to **Documents and Downloads** at [Polycom Support](#).

## Polycom and Partner Resources

In addition to this guide, the following documents and other resources provide details about the RealPresence DMA system. To access documents, go to [support.polycom.com](http://support.polycom.com).

- *Polycom RealPresence DMA System Release Notes*  
Provides information you need to know about the specific release of the system you are deploying.
- *Polycom RealPresence DMA System Operations Guide*  
Provides more detailed and specialized configuration, operation, and administration information you need to know when using the RealPresence DMA system.
- Online help—In the product user interface, select **Help > Help Contents** to access the entire help system, or click any **Help** button to see the specific help topic for that location.
- Partner product interoperability—Refer to the partner deployment guides.
- Specific certifications—Refer to: [www.polycom.com/solutions/solutions-by-industry/us-federal-government/certification\\_accreditation.html](http://www.polycom.com/solutions/solutions-by-industry/us-federal-government/certification_accreditation.html).

## The Polycom Community

The [Polycom Community](#) gives you access to the latest developer and support information. Participate in discussion forums to share ideas and solve problems with your colleagues. To register with the Polycom Community, simply create a Polycom online account. When logged in, you can access Polycom support personnel and participate in developer and support forums to find the latest information on hardware, software, and partner solutions topics.

# Preparing for System Installation

---

## Topics:

- [Prepare Client Systems](#)
- [Prepare the USB Flash Drive \(Appliance Edition Only\)](#)

Complete certain preparation tasks before you install and configure a RealPresence DMA system.

## Prepare Client Systems

To log into the RealPresence DMA system, you need a client system with the following hardware and software:

- Hardware
  - Monitor with 1024x768 (SXGA) minimum display resolution; 1400x900 (WSXGA+) or greater recommended
  - USB and Ethernet ports
- Software
  - Web browser that supports HTML5. Microsoft Internet Explorer® must be version 11 or later.

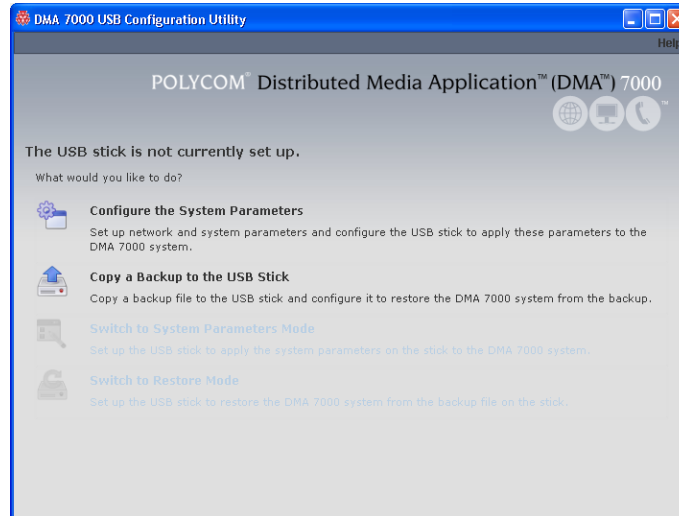
## Prepare the USB Flash Drive (Appliance Edition Only)

You can configure the RealPresence DMA system, Appliance Edition, server(s) using the Network Configuration Utility (available at [support.polycom.com](http://support.polycom.com)) and the USB flash drive included in the server package.

If you do not use the Network Configuration Utility, you can configure your system servers manually by using your client system to log into the web user interface and configure the settings. See [Configure Initial Settings Without the USB Flash Drive](#) on page 17.

### Procedure

1. From your local client system, go to the Polycom support site and download the Network Configuration Utility that matches your version of the RealPresence DMA system software.
2. Connect the blank USB flash drive to your client system.
3. Unzip the Network Configuration Utility files to the root of the USB flash drive.  
The Network Configuration Utility files must be at the root of the flash drive, not in a folder.
4. Do one of the following to launch the Network Configuration Utility:
  - a. From a client system running Microsoft Windows, launch the *dma7000-usb-gui.exe* file.
  - b. From a client system running a Unix-based OS (including Mac) run the *runUsbGui.sh* file.
5. In the Network Configuration Utility window, click **Configure the System Parameters**.



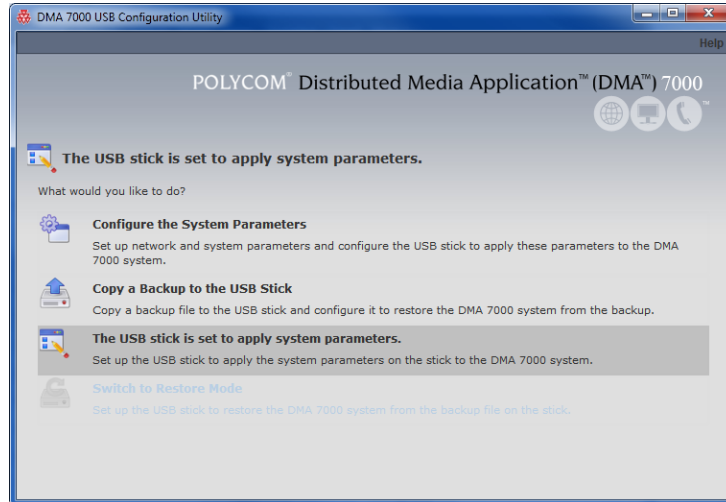
6. In the **Node Selection** window, click **Edit** next to **Node\_1**.
7. Select **Core configuration** or **Edge configuration** and click **Next**.
8. On the **Network** tab, enter the **Host name**, **Domain**, **DNS Search domains**, and **DNS 1**.
9. Select the **System IP type**.
10. Under **Network Interface Settings**, click **Add eth0**.
11. Under **IP Configuration**, select the **Mode** and enter the IP information for the **System IP type** you chose.
12. Configure the **Link Settings** and **LAN Security Settings** as needed.
13. Click **Done**.
14. Click **Next** to display the **Services** tab.
15. Select the **Interface** for **Management service**.
16. Select the **Private (LAN)** and **Public (WAN)** interfaces for the different **System Services**.
17. Click **Next** to display the **Routing** tab and add routes if necessary.
18. Click **Next** to display the **NTP** tab.
19. Select the correct **System time zone** for your location.

Polycom recommends that you select the best location-specific setting, not one of the generic GMT offset settings. The location-specific settings automatically include the correct daylight saving time adjustments (if any) for that location and will be updated as locales change their time policies in the future.

20. Under **NTP servers**, enter the IP addresses (or domain names) for the time servers.

Polycom recommends specifying at least one and preferably two time servers. At least one time server must be specified before creating or joining a supercluster.

21. Click **Done** to return to the initial Network Configuration Utility menu.
22. Verify that **The USB stick is set to apply system parameters** displays in the initial menu, as shown in the following figure.



23. Close the program.
24. On your PC, eject the USB flash drive.



# System Installation

---

## Topics:

- [Virtual Edition Installation](#)
- [Appliance Edition Installation](#)

The RealPresence DMA system is available in an Appliance Edition and a Virtual Edition. Refer to the following installation instructions based on your edition.

## Virtual Edition Installation

Before you install the RealPresence DMA system in your environment, review the Polycom RealPresence DMA System Release Notes and ensure that your host machine has the capacity for your planned Virtual Edition deployment. In addition, ensure that it meets the host guidelines recommended by Polycom.

### Host Installation Guidelines for Virtual Editions

Before deploying your Polycom RealPresence Virtual Edition software, review the following planning guidelines for your deployment. Unless otherwise noted, use these guidelines for all Polycom Virtual Editions.

Polycom recommends that a virtual environment administrator install the Virtual Edition software. After the installation of a Virtual Edition, additional configuration should be completed by someone who understands video conferencing.

### CPU Allocation

- Leave 2 cores unallocated, regardless of the number of cores present, how many licenses are purchased, and what other virtual machines will be present.
- For VMware, do not allocate CPU core 0. Host operating system performance may be affected if this core is assigned to the virtual machine.
- When possible, allocate cores on one CPU. This will enhance performance by reducing CPU-to-CPU communication times.
- Do not use processor oversubscription; maintain a 2:1 ratio of virtual CPU to physical CPU. For example, a system with 8 physical cores can support up to 16 virtual processors divided up into any combination among the virtual machines running on that host.
- When you are using Hyper-V, Polycom recommends disabling the Virtual Machine Queue of the Network Interface Card (NIC). For more information, see <https://support.microsoft.com/en-us/kb/2902166>

---

**Note:** CPU reservations can only be done after shutting down the virtual machine.

---

### Memory Allocation

In a Microsoft Hyper-V environment, you must not overprovision memory at the hypervisor layer. Dynamic memory for virtual machines is not supported.

## Disk

Hypervisors add overhead to disk operations. For best performance, ensure that the virtual machine is able to achieve the recommended IOPS listed in the following table.

### Disk Requirements

	Lab Environment	Production Environment
<b>Disk Performance</b>	170 Random IOPS (write) 170 Random IOPS (read)	230 Random IOPS (write) 450 Random IOPS (read)
<b>Network</b>	1GB Shared	1GB Dedicated 10GB Shared

Capacity information such as storage space and memory varies according to Virtual Edition. Please see release notes for your RealPresence Virtual Edition software for the minimum capacity requirements for your product.

## Install the Virtual Edition Software

You must install your RealPresence DMA Virtual Edition software with your native virtual environment tools.

After you install the OVA package, you need to use the Polycom RealPresence Resource Manager system, version 10.0 or higher, to add an instance of the RealPresence DMA system and manage licenses.

---

**Note:** If installing a Hyper-V version, you must use the **Copy** option.

---

### Procedure

1. Refer to the documentation for your virtual environment tools for instructions on installing a virtual instance.
2. Install an instance of the RealPresence DMA system, Virtual Edition.
3. Assign a static IP address to the instance using the console if your VM environment does not use DHCP.

## Assign a Static IP Address

The RealPresence DMA system requires a static IP address. If your VM environment has a DHCP server, it will assign an IP address to the instance. You can then assign a static IP address using the thinshell interface, the RealPresence DMA system's Network Configuration Utility, or the system's management user interface. The following procedure provides instructions for using the thinshell user interface.

### Procedure

1. Power on the newly-installed VM.
2. Click in the console window of your virtual environment tool and press **Enter** if necessary to see the login prompt.  
The thinshell interface displays .
3. Log in with username `polycom` and password `polycom`.
4. When prompted, enter a new password and click **OK**.
5. Click **Yes** to continue past the warning.
6. Select **Change Host Name** and click **OK**.

7. Enter the FQDN of the system and click **OK**.

8. Select **Network Settings** and click **OK**.

9. Select **eth0** and click **OK**.

You can only configure eth0 in the thinshell interface, even if other network interfaces are active.

10. Select **Static address setup** and assign a static **IP address**, **Subnet Mask**, and **Default Gateway IP**.

11. Click **OK**.

The network service restarts and the **Current Network Setup** screen displays.

12. Click **OK**.

13. Select **DNS Configuration** and click **OK**.

The primary **Domain** is pre-populated from the host name (FQDN) you entered previously.

14. Enter **Search Domains** if you have more than one, using a space as a delimiter between each domain.

15. Enter **Name Server 1**.

16. Enter **Name Server 2** and **Name Server 3** (optional).

17. Click **OK**.

18. Select **Reboot Server** to enable the settings to take effect.

19. Click **Yes** to confirm the reboot.

## Appliance Edition Installation

If you purchased an Appliance Edition, you need to install the server. You can download the software from the Polycom support site and create a DVD to install the software on your server.

Before beginning your installation, review the most recent *Polycom RealPresence DMA System Release Notes*.

## Shipment Contents

Polycom Rack Server shipments include the server and other contents. You should verify the type of server and other contents of your shipment when you unpack the system.

The following table describes shipment contents based on the type of server you purchased. **Note that licensing information and other items may be shipped separately.**

Item	R620	R630	R640	R220/R230
1 Polycom Rack Server	X	X	X	X
1 system DVD	X (May be shipped separately)			

Item	R620	R630	R640	R220/R230
1 blank USB flash drive	X (RealPresence Resource Manager appliances do not include a blank USB flash drive)	X	X	X
1 USB flash drive labeled <i>Diagnostics</i> that contains server diagnostics utilities. Use these utilities only under the direction of Polycom Global Services.	X	X	X	X
Power cord(s)	May be shipped separately	May be shipped separately	May be shipped separately	May be shipped separately
Rail kit	Slide rails with cable management arm	Slide rails with cable management arm	Slide rails with cable management arm	Static rails
Bezel with Polycom badge	X	X	X	X
Polycom warranty letter	X	X	X	X
<i>Product Information Guide</i> for R620, R630, R220 <i>Enterprise Products Safety, Environmental, and Regulatory Information</i> for R230, R640	X	X	X	X

## Unpack and Install the Hardware

The RealPresence DMA system, Appliance Edition, can be installed on the following servers:

- Polycom Rack Server 640 (R640)
- Polycom Rack Server 630 (R630)
- Polycom Rack Server 620 (R620)
- Polycom Rack Server 230 (R230)
- Polycom Rack Server 220 (R220)

You should verify the type of server and other contents of your shipment when you unpack the system.

## Procedure

1. Examine the shipping container for damage.

If you find damage, file a claim with the delivery carrier. Polycom is not responsible for damage sustained during shipment of this product.

2. Open and review the container packing slips.
3. Open the container and examine the contents for damage.

If you find damage, file a claim with the delivery carrier. Keep all shipping materials in case you need them later.

4. Unpack your system and identify each item.

A single-server RealPresence DMA system shipment includes the items listed in [Shipment Contents](#) on page 9.

5. Assemble the rails and install the server in the rack.

To rack-mount a server, see the following instructions:

- Polycom Rack Server 640 (R640) server:  
<http://www.dell.com/support/home/us/en/04/product-support/product/poweredge-r640/manuals>
- Polycom Rack Server 630 (R630) server:  
<http://www.dell.com/support/home/us/en/04/product-support/product/poweredge-r630/manuals>
- Polycom Rack Server 620 (R620) server:  
<http://www.dell.com/support/home/us/en/04/product-support/product/poweredge-r620/manuals>
- Polycom Rack Server 230 (R230) server:  
<http://www.dell.com/support/home/sg/en/sghsdt1/product-support/product/poweredge-r230/manuals>
- Polycom Rack Server 220 (R220) server:  
<http://www.dell.com/support/home/us/en/04/product-support/product/poweredge-r220/manuals>

6. Connect the server's power cable(s) to the server and connect a VGA cable from the server to the console monitor.
7. Connect all power cables into a grounded electrical outlet or separate power source, such as an uninterruptible power supply (UPS) or power distribution unit (PDU).
8. Connect a keyboard to the server.
9. Press the power button on the server and on the monitor.  
The power indicators should light.
10. Create one access password for the system BIOS.
11. Set the correct system time in the system BIOS.
12. Install the bezel (optional).
13. Connect the Ethernet port associated with eth0 to the enterprise network.

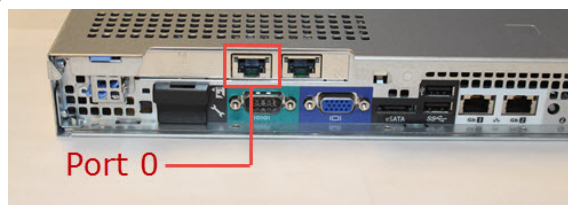
On Polycom R630 and R620 servers, the Ethernet port labeled **GB 1** is the eth0 network interface.

On Polycom R640 servers, the port that's the furthest on the left of the four consecutive Ethernet ports is the eth0 network interface.

On Polycom R220 servers, the Ethernet port labeled **Port 0** is the eth0 network interface.

On Polycom R230 servers, the Ethernet port labeled **Port 0** is typically the eth0 or eth2 network interface. To determine which network interface is associated with Port 0, go to the BIOS setup menu and view the device settings. Then connect the port associated with eth0 to your enterprise network.

**Figure 1: Port 0 Location for Polycom Rack Server 220**



**Figure 2: Port 0 Location for Polycom Rack Server 230**




---

**Caution:** Do not power off a Polycom Rack Server R630 or R620 by unplugging it or otherwise removing power, especially if the system will remain turned off for some time. If a server loses power without being properly shut down, the battery is eventually depleted. If this happens, the server cannot be restarted without user input, requiring a keyboard and monitor.

---

## Create a DVD for the System Software

To install the RealPresence DMA system software, you need to download the software ISO image from the Polycom Support site, burn it onto a blank DVD, then use the DVD to install the software onto the RealPresence DMA server.

### Procedure

1. Download the RealPresence DMA software ISO image from [Polycom Support](#) to your Windows client system.
2. Insert a blank, recordable DVD into your DVD-RW drive.
3. Using your DVD recording software, burn the ISO image onto the DVD.
4. Verify that the ISO image burned successfully to the DVD, then remove it from your client system.

## Install the System Software

You can install the system software using the RealPresence DMA DVD you created.

### Procedure

1. Turn on the system server and insert the DVD.
2. Restart the system server.

The server boots from the DVD and the installation starts. Installation takes approximately 20-30 minutes, after which the DVD ejects and the server restarts twice. For Polycom Rack Server 630-based or 620-based systems, **DMA Installed** displays on the front panel LCD when installation is complete. This indicates that the system software is installed but its network and time settings are not configured.

3. Remove the DVD from the server's DVD drive.
4. If you are installing a second system, repeat these steps for the second system server.

# Initial Configuration

---

## Topics:

- [RealPresence DMA System Configurations](#)
- [Configure Initial Settings for the Virtual Edition](#)
- [Configure Initial Settings for the Appliance Edition](#)
- [System Licenses](#)
- [Additional Configuration](#)

## RealPresence DMA System Configurations

When you install one or more RealPresence DMA systems, you need to configure each system with a core configuration or an edge configuration as follows:

- A core configuration is recommended if the system(s) is deployed inside your network environment.
- An edge configuration provides additional security features and is recommended if you deploy the system in the DMZ and it communicates with one or more core-configured systems inside your enterprise network.
- A combination system is one of the following:
  - an edge-configured system that resides in the DMZ and does not communicate with any core-configured system, or
  - an edge-configured system inside the enterprise that is part of a VPN tunnel and does not communicate with any core-configured system.

## Configure Initial Settings for the Virtual Edition

After you install a Virtual Edition instance, you need to configure the initial system settings.

### Procedure

1. Open a web browser and enter the URL of the system in the address bar (ignore any security certificate warning that may appear):

```
https://<IP address>:8443/dma/
```

2. Enter the factory default administrator credentials:

**Username:** admin

**Password:** Polycom12#\$

3. Click **Log In**.

The End User License Agreement (EULA) displays.

4. Select **Automatically send usage data**.

This step is optional but recommended. When selected, you agree to send usage data to Polycom to help improve the product. See the *Polycom RealPresence DMA System Operations Guide* for more information about automatic data collection.



5. Select **I accept the terms of this license agreement** and click **Accept**.
6. On the **First Time Setup** screen, click **Download Network Program**.
7. Extract the .zip file.
8. Do one of the following:
  - From a client system running Microsoft Windows, launch the *dma7000-usb-gui.exe* file.
  - From a client system running a Unix-based OS (including Mac) run the *runUsbGui.sh* file.

The Network Configuration Assistant displays.

9. Select **Configure the System Parameters**.
10. Click **Edit** next to **Node\_1**.
11. Select the system configuration as follows:
  - Select Core Configuration if this is the first RealPresence DMA system that you are installing.
  - Select Edge Configuration if you have already configured a core system or if you have only one system that you're configuring as an edge combination system.
12. Click **Next**.
13. On the **Network** tab, enter the **Host name**, **Domain**, **DNS Search domains**, and **DNS 1**.
14. Select the **System IP type**.
15. Under **Network Interface Settings**, click **Add eth0**.
16. Under **IP Configuration**, select the **Mode** and enter the IP information for the **System IP type** you chose.
17. Configure the **Link Settings** and **LAN Security Settings** as needed.
18. Click **Done**.
19. Click **Next** to display the **Services** tab.
20. Select the **Interface** for **Management service**.
21. Select the **Private (LAN)** and **Public (WAN)** interfaces for the different **System Services**.
22. Click **Next** to display the **Routing** tab and add routes if necessary.
23. Click **Next** to display the **NTP** tab.
24. Select the correct **System time zone** for your location.
 

Polycom recommends that you select the best location-specific setting, not one of the generic GMT offset settings. The location-specific settings automatically include the correct daylight saving time adjustments (if any) for that location and will be updated as locales change their time policies in the future.
25. Under **NTP servers**, enter the IP addresses (or domain names) for the time servers.
 

Polycom recommends specifying at least one and preferably two time servers. At least one time server must be specified before creating or joining a supercluster.
26. Click **Done** to return to the initial Network Configuration Assistant menu and close the window.
 

The Network Configuration Assistant creates a local **dma** folder that contains all configuration files.
27. Return to the **First Time Setup** screen and select **Upload and Apply Network Config**.
28. Go to the **dma** folder and select the .zip file.
29. Click **Open**.
30. Click **Yes** to confirm you want to open the .zip file.
 

The system reboots and the login screen displays.
31. Log into the system with the following credentials:

**Username:** admin

**Password:** Polycom12#&

The RealPresence DMA system's dashboard displays. The tasks required to complete the system configuration are described in the online help and the *Polycom RealPresence DMA System Operations Guide*.

## Configure Initial Settings for the Appliance Edition

You can configure the RealPresence DMA Appliance Edition server(s) using the USB flash drive on which you saved the system settings you configured with the Network Configuration Utility. If you have not prepared the USB flash drive with the required settings, see [Prepare the USB Flash Drive \(Appliance Edition Only\)](#) on page 4.

### Procedure

1. Power off the server.

The server must be powered off before you insert the USB flash drive.

2. Insert the USB flash drive into a USB port.
3. Power on the server.

After it boots, the server reads its network and system parameters from the USB flash drive and reboots at least one time.

4. If you are using a Polycom Rack Server R630 or R620, wait for the front panel LCD to display **DMA Ready**.

---

**Caution:** If you are using a Polycom Rack Server R630 or R620 and the message **DMA Installed** displays on the LCD, the system software is installed but not configured. Make sure the USB flash drive is set to apply system parameters and inserted into a functioning USB port, then restart the server.

---

5. Disconnect the USB flash drive from the server.
6. Do one of the following, depending on the server you have:
  - a. For Polycom Rack Server R630 or R620 systems, connect an Ethernet cable from the GB 1 Ethernet port of the server(s) to the enterprise network to be used for management or combined traffic.
  - b. For Polycom Rack Server R220 or R230 systems, connect an Ethernet cable between the Port 0 Ethernet port of the server(s) to the enterprise network.
7. On a client system with network access to the RealPresence DMA system, point your browser to the system's host name or IP address.
8. Log in with username `admin` and password `Polycom12#&`.

The End User License Agreement (EULA) displays.

9. Select **Automatically send usage data**.

This step is optional but recommended. When selected, you agree to send usage data to Polycom to help improve the product. See the *Polycom RealPresence DMA System Operations Guide* for more information about automatic data collection.

10. Select **I accept the terms of this license agreement** and click **Accept**.

The RealPresence DMA system's dashboard displays. The tasks required to complete the system configuration are described in the online help and the *Polycom RealPresence DMA System Operations Guide*.

## Configure Initial Settings Without the USB Flash Drive

If you do not use the Network Configuration Utility on the USB flash drive, you can use the following procedure to complete the initial setup using a laptop PC and an Ethernet cable.

The RealPresence DMA system servers are shipped with the following default network settings that you can use to connect to the system:

IP address: 192.168.200.10

Subnet mask: 255.255.255.0

Default gateway: 192.168.200.1

### Procedure

1. Ensure that the server is NOT connected to the enterprise network.
2. Configure the network settings on your laptop to connect it to the same network segment as the RealPresence DMA system server.  
Example settings:
  - IP address: 192.168.200.20
  - Subnet mask: 255.255.255.0
  - Default gateway: 192.168.200.1
3. Do one of the following:
  - a. If you are using a Polycom Rack Server R630 or R620 system, connect an Ethernet cable between your laptop and the **GB 1** interface of the server.
  - b. If you are using a Polycom Rack Server R230 or R220 system, connect an Ethernet cable between your laptop and the **Port 0** interface of the server.

4. Power on the server.

The server starts, which takes several minutes. If you are using a Polycom Rack Server R630 or R620 system, after the server starts, **DMA Installed** displays on the front panel LCD. This indicates that the system software is installed but its network and time settings are not configured.

---

**Caution:** If you are using a Polycom Rack Server R630 or R620 and **DMA Installed** does not display on the LCD, stop. Contact Polycom Global Services for assistance.

---

5. On the laptop, point your browser to <http://192.168.200.10> (ignore any security certificate warning that may appear).
6. Log in with username `admin` and password `Polycom12#$`.  
The End User License Agreement (EULA) displays with a check box to accept or decline the Agreement. You can also agree or disagree to send usage data to Polycom to help improve the product. See the *Polycom RealPresence DMA System Operations Guide* for more information about automatic data collection.
7. Select **Automatically send usage data**.  
This step is optional but highly recommended.
8. Select **I accept the terms of this license agreement** and click **Accept**.
9. Select **Core Configuration** or **Edge Configuration**.  
The dashboard of the RealPresence DMA system's user interface displays. Using its menus, you can complete your system setup.
10. Go to **Admin > Server > Network Settings**.
11. Enter the **Host name**, **Domain**, **DNS Search domains**, and **DNS 1**.

12. If you need to set up a special network routing rule or rules, click **Routing Configuration**, create the rule(s), and click **OK**.
13. Click **Update**.
14. When asked to confirm restarting the system, click **Yes**.
15. While the server is restarting, do the following:
  - a. Disconnect the Ethernet cable from the laptop.
  - b. If you are using a Polycom Rack Server R630 or R620, connect the server's GB 1 Ethernet port to the enterprise network to be used for management or combined traffic.
  - c. If you are using a Polycom Rack Server R230 or R220, connect the server's Port 0 Ethernet port to the enterprise network to be used for management or combined traffic.

The restart process takes several minutes. If you are using a Polycom Rack Server R630 or R620, after the server starts, **DMA Ready** displays on the front panel LCD.

16. From a PC with network access to the RealPresence DMA system, point your browser to your system's host name or IP address.
17. Log in with username `admin` and password `Polycom12#$.`
18. Go to **Admin > Server > Time Settings** and select the correct **System time zone** for your location.

Polycom recommends selecting the best location-specific setting, not one of the generic GMT offset settings.

19. Under **NTP servers**, enter the IP addresses or domain names for the time servers.  
Polycom recommends specifying at least one and preferably three time servers. At least one time server must be specified before creating or joining a supercluster.
20. Click **Update**.  
The system restarts.

---

**Note:** If you are using a Polycom Rack Server R630 or R620, after the server starts, **DMA Ready** displays on the front panel LCD.

---

21. When asked to confirm restarting the system, click **Yes**.
22. Log back into the system from your browser and complete your system setup.

## System Licenses

Once you have configured the initial settings, you must license your RealPresence DMA system. This process depends on the type of license you have for your product.

- If you are a Polycom RealPresence Clariti™ customer, you must use the Polycom RealPresence Resource Manager system, version 10.0 or later, to license your product.
- If you are not a RealPresence Clariti customer, you must use a license file and activation key code to license your product.

## License Your System with RealPresence Resource Manager

The RealPresence Resource Manager system must communicate with your RealPresence DMA system. The RealPresence Resource Manager system licenses and monitors your system, so after you install the RealPresence DMA system, you must add the instance to the RealPresence Resource Manager system to establish communication.

For instructions on how to add a system instance in the RealPresence Resource Manager system, see the *Polycom RealPresence Resource Manager System Operations Guide*.

## **License Your System with a License File**

If you are not a Polycom RealPresence Clariti customer, you need to license your RealPresence DMA system using a license file and activation key code. See the *Polycom RealPresence DMA System Operations Guide* for instructions.

## **Additional Configuration**

See the *Polycom RealPresence DMA System Operations Guide* for additional configuration tasks.