

Using Hyperterminal with Vortex[®] and Echofree Devices

Application Note

Polycom Installed Voice
Business Group

September 2004



TABLE OF CONTENTS

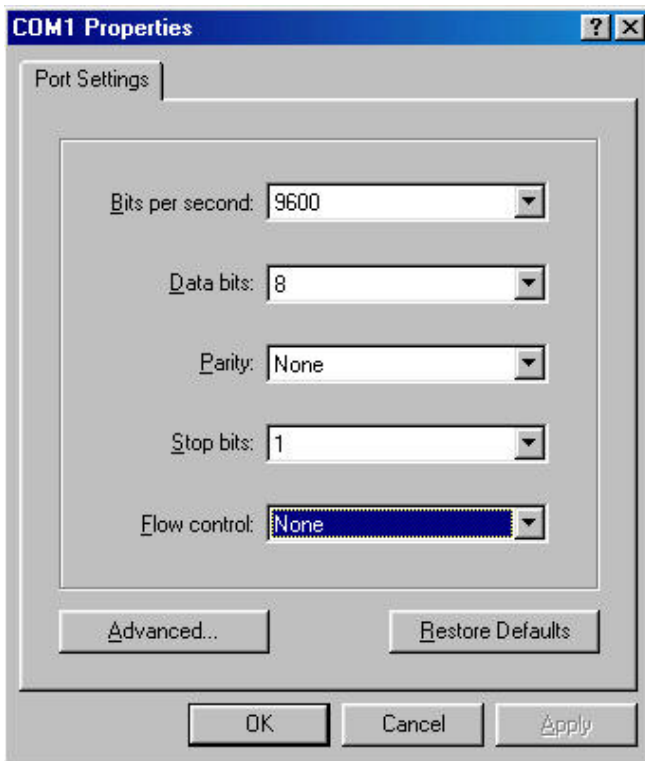
TABLE OF CONTENTS.....	1
TABLE OF CONTENTS.....	2
HYPERTERMINAL FOR WINDOWS® 98	3
HYPERTERMINAL FOR WINDOWS ME, NT, 2000, AND XP	6
TECHNICAL SUPPORT	9

HYPERTERMINAL FOR WINDOWS® 98

Open Hyperterminal and create a name for the New Connection. Select DIRECT TO COM 1 for the CONNECT USING option.



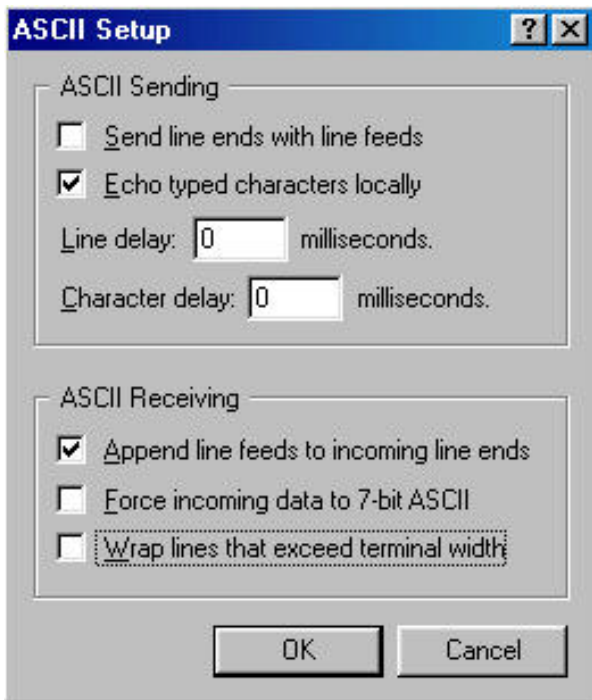
Select 9600, 8, N, 1, and no flow control. Hit OK.





The BITS PER SECOND and FLOW CONTROL will vary depending on the current state of those values inside the EF Device. The DATA BITS, PARITY, AND STOP BITS parameters will not change regardless of the BITS PER SECOND or FLOW CONTROL status. The default values for baud rate and flow control are 9600 and None respectively.

Go to FILE, PROPERTIES and click the SETTINGS Tab. Click the ASCII setup button. Uncheck WRAP LINE THAT EXCEED TERMINAL WIDTH and check ECHO TYPED CHARACTERS LOCALLY and APPEND LINE FEEDS TO INCOMING LINE ENDS. Click on OK.



The lower left corner of the window shows the Connection Time, Terminal Emulation, and Comm port properties. An odd feature of Hyperterminal is that although you have already specified the Comm port settings, Hyperterminal is still in a Auto Detect mode. If you try to send commands now, the EF Device will not be able to process them.

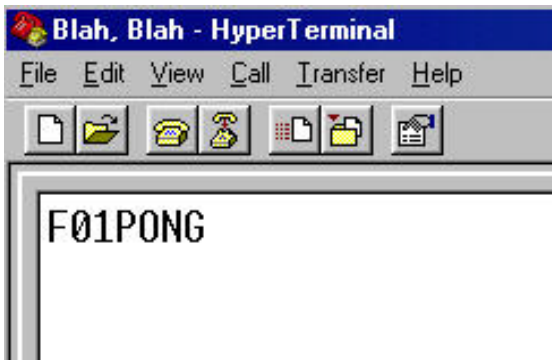


To fix this, go to the device and select something from the front panel that will generate an acknowledgement back to Hyperterminal. For the Vortex EF2280 and EF2241, an example would be

changing the Front Panel Meter from Output D to, say, Output C. For the Vortex EF2201 and EF2211, this could be taking the phone on and off hook. For the Vortex EF2210, this could be changing the mic gain on the input channel. For the EF1210, you could change the Input channel meter from 1 to 2. For the EF200, you could take the phone on and off hook. Once this is done, the lower left corner window will change to reflect the proper port settings (in this case 9600-8-N-1.)



Another odd feature of Hyperterminal for Windows 98 is that although you checked ECHO TYPED CHARACTERS LOCALLY sometimes the characters you typed are not shown on the screen. Thus, if you type ***PING, you won't see those characters on the screen but you will see the F01PONG acknowledgment.

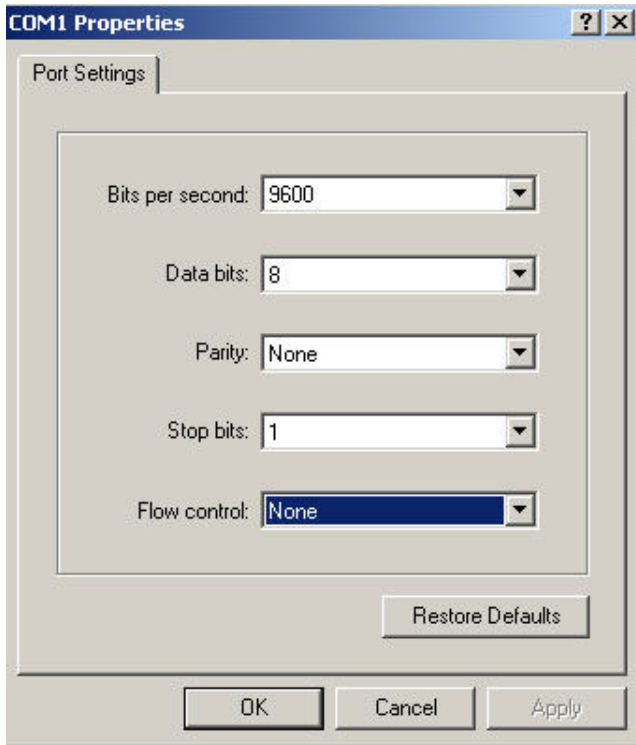


HYPERTERMINAL FOR WINDOWS ME, NT, 2000, AND XP

Open Hyperterminal and create a name for the New Connection. Select COM 1 for the CONNECT USING option.

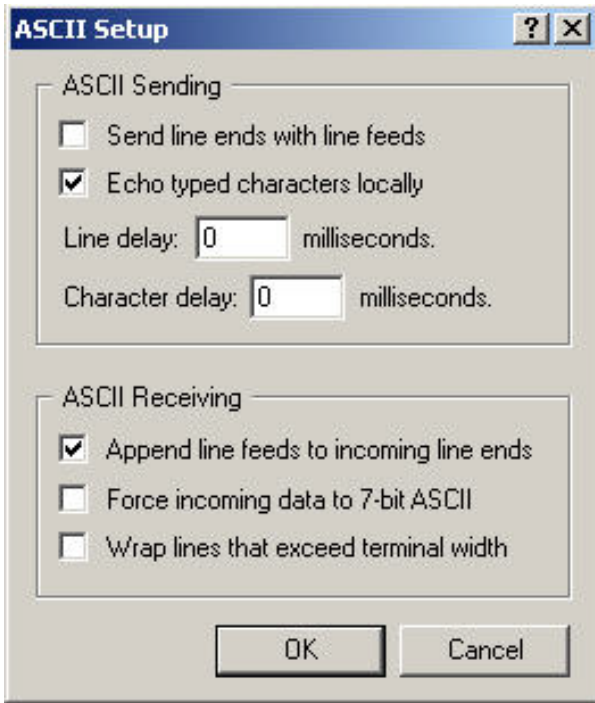


Select 9600, 8, N, 1, and no flow control. Click on OK.

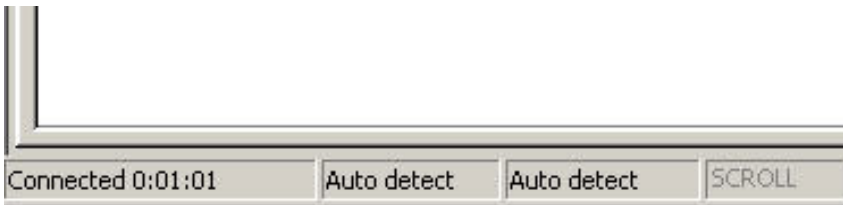


The BITS PER SECOND and FLOW CONTROL will vary depending on the current state of those values inside the EF Device. The DATA BITS, PARITY, AND STOP BITS parameters will not change regardless of the BITS PER SECOND or FLOW CONTROL status. The default values for baud rate and flow control are 9600 and None respectively.

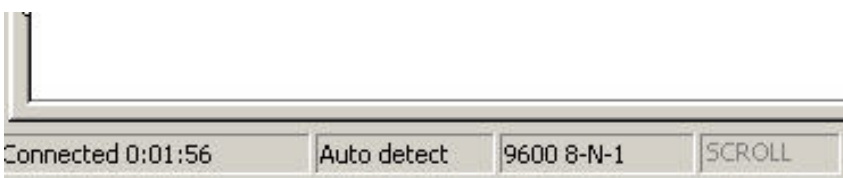
Go to FILE, PROPERTIES and click the SETTINGS Tab. Click the ASCII setup button. Uncheck WRAP LINE THAT EXCEED TERMINAL WIDTH and check ECHO TYPED CHARACTERS LOCALLY and APPEND LINE FEEDS TO INCOMING LINE ENDS. Click on OK.



The lower left corner of the window shows the Connection Time, Terminal Emulation, and Comm port properties. An odd feature of Hyperterminal is that although you have already specified the Comm port settings, Hyperterminal is still in a Auto Detect mode. If you try to send commands now, the EF Device will not be able to process them.



To fix this, go to the device and select something from the front panel that will generate an acknowledgement back to Hyperterminal. For the Vortex EF2280 and EF2241, an example would be changing the Front Panel Meter from Output D to, say, Output C. For the Vortex EF2201 and EF2211, you could take the phone on and off hook. For the Vortex EF2210, try changing the mic gain on the input channel. For the EF1210, change the Input channel meter from 1 to 2. For the EF200, you could take the phone on and off hook. Once this is done, the lower left corner window will change to reflect the proper port settings (in this case 9600-8-N-1).



Another odd feature of Hyperterminal for Windows ME, 2000, or XP is that any commands that you enter will be overwritten by the acknowledgment from the EF Device on the same line so that you can't see your original command. You can watch what you type and that text will be shown in the window before you press the ENTER key. After that, the acknowledgment will overwrite the just entered command on the same line.

TECHNICAL SUPPORT

For support on the Vortex product line, call toll-free (USA/Canada) 888-248-4143, then select option 1, then option 3.

For exclusive Integrator and Consultant focused support (through our PASS program), dial 1.408.474.2048; this number will get you help on video and Vortex products.

For general technical support, dial 1.800.POLYCOM

Polycom Installed Voice Business group Contact Information

Our address is:

9040 Roswell Road
Suite 450
Atlanta, GA 30350
770-350-4140 Phone
770-350-4142 Fax

Polycom, the Polycom logo, Vortex and ViewStation are registered trademarks and VS4000 and iPower are trademarks of Polycom, Inc. in the USA and various countries. All other brand names, product names, and trademarks are the sole property of their respective owners. Rev. 09/04