

POLYCOM® KWS600v3 Configuration Guide

(SIP Protocol)

Broadsoft R13

Samsung OS2700 SW 4.11

1416 8710, ed. 1

Copyright © Polycom, Inc.
All Rights Reserved

Catalog No. 1416 8710
Edition 1

Proprietary and Confidential

The information contained herein is the sole intellectual property of Polycom, Inc. No distribution, reproduction or unauthorized use of these materials is permitted without the expressed written consent of Polycom, Inc. Information contained herein is subject to change without notice and does not represent commitment of any type on the part of Polycom, Inc. Polycom and Accord are registered trademarks of Polycom, Inc.

Notice

While reasonable effort was made to ensure that the information in this document was complete and accurate at the time of printing, Polycom, Inc., cannot assume responsibility for any errors. Changes and/or corrections to the information contained in this document may be incorporated into future issues.

Contents

1 Preface

Before You Begin	1-1
Chapter Overview	1-2
Related Documentation	1-2

2 SIP Specific Configuration on Samsung OS2700 SW 4.11

Configuring DECT Master	2-2
Configuring DECT System	2-3
Advanced Menu	2-4

3 SIP Specific Configuration on Broadsoft R13

Configuring DECT Master	3-2
Configuring DECT System	3-3
Advanced Menu	3-4

Preface

This guide describes the specific configuration of a KIRK Wireless Server 600v3 (KWS600v3) when using SIP Protocol on Samsung OS2700 SW 4.11 and on Broadsoft R13. The guide is intended for qualified technicians who will install, register and configure a KWS600v3 in a SIP environment. To qualify to install the KWS600v3 Solution, you must have successfully completed the KWS600v3 technical training.

Before You Begin

This guide assumes the following:

- that users have a working knowledge of the call handlers operation
- that the call handler is installed and initialized and is working correctly
- that users have a working knowledge of the KIRK Wireless Server 600v3
- that users have a working knowledge of the Web based Administration Page
- that users are familiar with the KIRK Wireless Server 600v3 Installation and Configuration Guide
- that the IP address of the KWS600v3 is within the same network area as the pbx.

Chapter Overview

Where is it?	What is it about?	When to use it?
Chapter 2	SIP Specific Configuration on Samsung OS2700 SW 4.11	To learn how to configure a KWS600v3 when using SIP Protocol on Samsung OS2700 SW 4.11.
Chapter 3	SIP Specific Configuration Broadsoft R13	To learn how to configure a KWS600v3 when using SIP Protocol on Samsung OS2700 SW 4.11.

Related Documentation

For further information about the system components not covered by this manual, please refer to the following documentation:

<i>Subject</i>	<i>Documentation</i>
KIRK Wireless Server 600v3	Installation and Configuration Guide

SIP Specific Configuration on Samsung OS2700 SW 4.11

This section describes how to configure the KIRK Wireless Server 600v3 when using SIP Protocol on Samsung OS2700 SW 4.11.

For detailed information about installing and configuring the KWS600v3 in general, please refer to the KIRK Wireless Server 600v3 Installation and Configuration Guide.

For information about accessing the web based Administration Page of the KIRK Wireless Server 600v3, please refer to the KIRK Wireless Server 600v3 Installation and Configuration Guide.

This section contains information about:

- [“Configuring DECT Master”](#) on page 2-2
- [“Configuring DECT System”](#) on page 2-3
- [“Advanced Menu”](#) on page 2-4

Configuring DECT Master

When configuring the KWS600v3 in a SIP environment on Samsung OS2700 SW 4.11 it is necessary to go through the following steps in the DECT Master configuration:

- 1 Under the **Configuration** menu, click **DECT**, and then click **MASTER**.
- 2 In the **GK** field, type the IP address of the Samsung PBX.
- 3 In the **Prot** field, select *SIP*.
- 4 In the **Hold Signaling** field, enter *sendonly with 0.0.0.0*
- 5 Enable the **Name for Authentication** check box.
- 6 Click **OK**.

Click **Reset** (under **Administration** menu) to save your configuration.

Figure 2-1 Adm. Page: Configuration/DECT/Master page - SIP Protocol on Samsung OS2700 SW 4.11

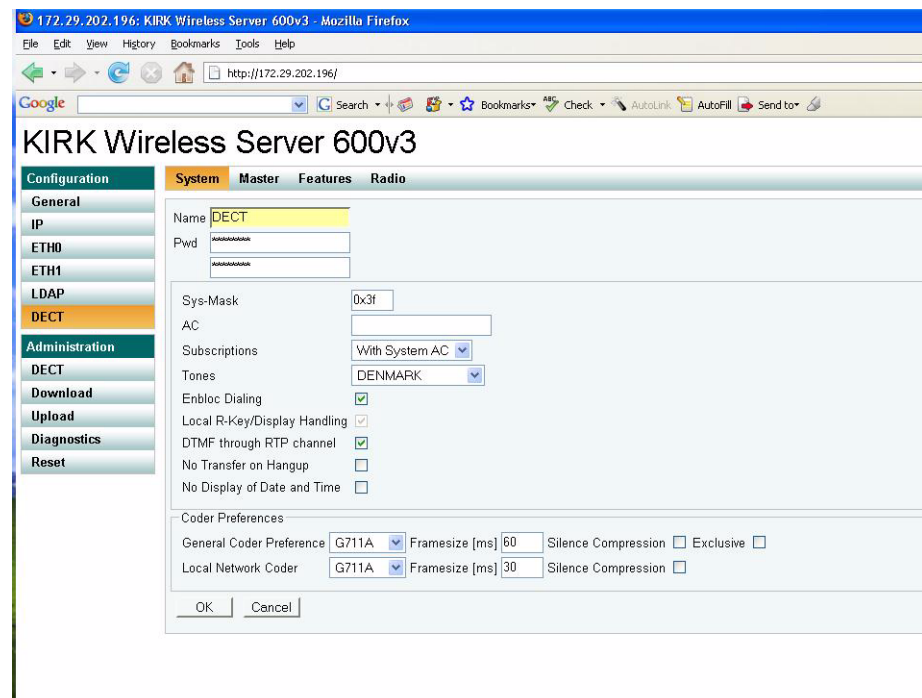


Configuring DECT System

When configuring the KWS600v3 in a SIP environment on Samsung OS2700 SW 4.11, it is necessary to go through the following steps in the DECT System configuration:

- 1 Under the **Configuration** menu, click **DECT**, and then click **System**.
- 2 Fill in the password in the field **Pwd** and in the field below. The password is *ip1200* (case sensitive).
- 3 In the field **Subscriptions** select either *With System AC* or *With User AC* (defined by the PBX).
- 4 Enable the **Enbloc Dialing** check box in order to receive dial tone before dialing.
- 5 Enable the **DTMF through RTP channel** check box.
- 6 In the **Coder Preferences** area it is possible to choose the type of codec.
- 7 Click **OK**.
- 8 Click **Reset** (under **Administration** menu) to save your configuration.

Figure 2-2 Adm. Page: Configuration/DECT/SYSTEM page - SIP Protocol on Samsung OS2700 SW 4.11

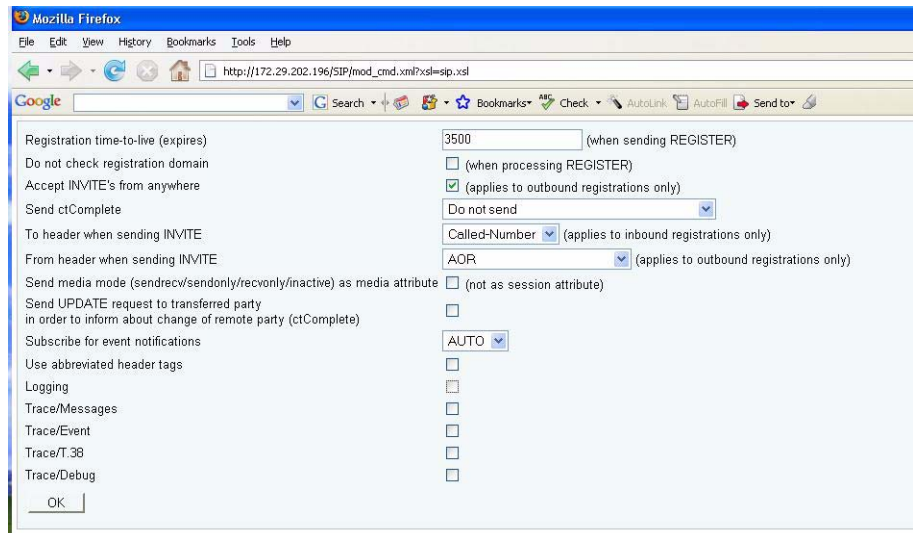


Advanced Menu

When configuring the KWS600v3 in a SIP environment on Samsung OS2700 SW 4.11, it is necessary to go through the following steps in the Advanced Menu:

- 1 Open your web browser and type the following access address:
http://172.29.202.196/SIP/mod_cmd.xml?xsl=sip.xsl
- 2 In the field **Registration time-to-live (expires)** the default is 120 sec. In order for the phones not to register that often it is necessary to enter the number 3500.
- 3 The **Accept INVITE's from anywhere** check box has to be enabled.
- 4 Enable the **Send media mode (sendrecv/sendonly/recvonly/inactive) as media attribute** check box.
- 5 Click **OK**.
- 6 Click **Reset** (under **Administration** menu) to save your configuration.

Figure 2-3 Advanced Menu:Configuration - SIP Protocol on Samsung OS2700 SW 4.11



SIP Specific Configuration on Broadsoft R13

This section describes how to configure the KIRK Wireless Server 600v3 when using SIP Protocol on Broadsoft R13.

For detailed information about installing and configuring the KWS600v3 in general, please refer to the KIRK Wireless Server 600v3 Installation and Configuration Guide.

For information about accessing the web based Administration Page of the KIRK Wireless Server 600v3, please refer to the KIRK Wireless Server 600v3 Installation and Configuration Guide.

This section contains information about:

- [“Configuring DECT Master”](#) on page 3-2
- [“Configuring DECT System”](#) on page 3-3
- [“Advanced Menu”](#) on page 3-4

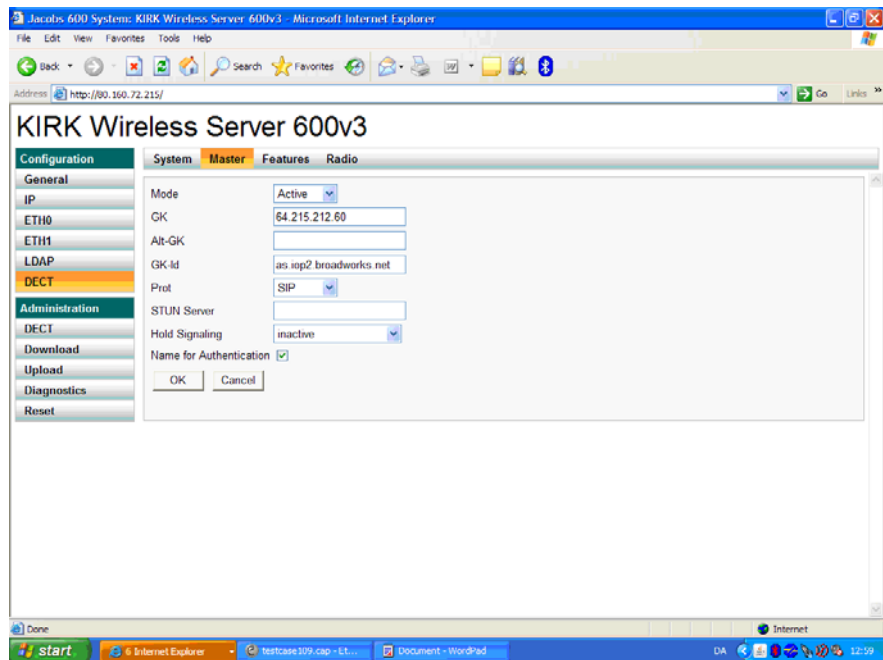
Configuring DECT Master

When configuring the KWS600v3 in a SIP environment on Broadsoft R13 it is necessary to go through the following steps in the DECT Master configuration.

- 1 Under the **Configuration** menu, click **DECT**, and then click **MASTER**.
- 2 In the **GK** field, type the IP address of the Broadsoft PBX.
- 3 In the **GK-Id** field, type a domain name. Contact your system administrator for more information.
- 4 In the **Prot** field, select SIP.
- 5 In the **Hold Signaling** field, use *inactive*.
- 6 Enable the **Name for Authentication** check box.
- 7 Click **OK**.

Click **Reset** (under **Administration** menu) to save your configuration.

Figure 3-1 Adm. Page: Configuration/DECT/Master page - SIP Protocol on Broadsoft R13

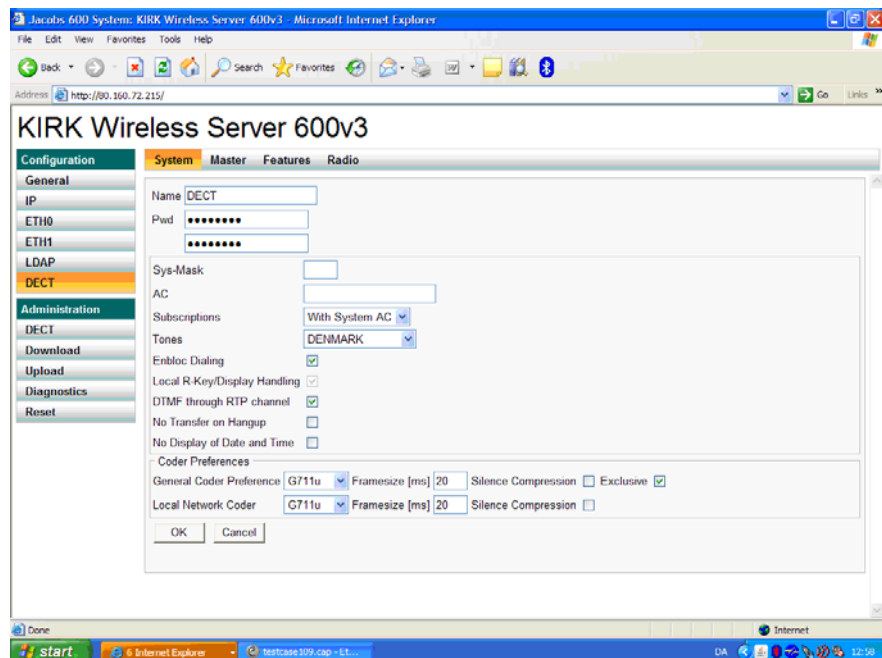


Configuring DECT System

When configuring the KWS600v3 in a SIP environment on Broadsoft R13, it is necessary to go through the following steps in the DECT System configuration:

- 1 Under the **Configuration** menu, click **DECT**, and then click **System**.
- 2 Fill in the password in the field **Pwd** and in the field below. The password is *ip1200* (case sensitive).
- 3 In the field **Subscriptions** select either *With System AC* or *With User AC* (defined by the PBX).
- 4 Enable the **Enbloc Dialing** check box in order to receive dial tone before dialing.
- 5 Enable the **DTMF through RTP channel** check box.
- 6 In the **Coder Preferences** area it is possible to choose the type of codec.
- 7 Click **OK**.
- 8 Click **Reset** (under **Administration** menu) to save your configuration.

Figure 3-2 Adm. Page: Configuraiton/DECT/SYSTEM page - SIP Protocol on Broadsoft R13



Advanced Menu

When configuring the KWS600v3 in a SIP environment on Broadsoft R13, it is necessary to go through the following steps in the Advanced Menu:

- 1 Open your web browser and type the following access address:
http://172.29.202.196/SIP/mod_cmd.xml?xsl=sip.xsl
- 2 In the field **Registration time-to-live (expires)** the default is 120 sec. In order for the phones not to register that often it is necessary to enter the number 3500.
- 3 The **Accept INVITE's from anywhere** check box has to be enabled.
- 4 Enable the **Send media mode (sendrecv/sendonly/recvonly/inactive) as media attribute** check box.
- 5 Click **OK**.
- 6 Click **Reset** (under **Administration** menu) to save your configuration.

Figure 3-3 Advanced Menu:Configuration - SIP Protocol on Broadsoft R13

