

# ReadiManager®

---

## Administration Guide for IBM® Lotus® Notes® Scheduling Plugin



## Trademark Information

Polycom®, the Triangles logo, ReadiManager®, SoundPoint®, SoundStation®, ViaVideo®, VoiceStation®, and Vortex are registered trademarks of Polycom, Inc. Convene™, Global Management System™, iPower™, MGC™, People+Content™, People On Content™, Polcyom Conference Suite™, Polycom HD Voice™, Polycom PathNavigator™, Polycom VideoPlus™, Polycom VoicePlus™, PVX™, RAS™, ReadiConvene™, RMX 2000™, RSS™, V2iU™, VS4000™, VSX™, and VTX™ are trademarks of Polycom, Inc.

Other product and corporate names may be trademarks of other companies and are only used as a fair use reference without intent to infringe.

## Patent Information

The accompanying product is protected by one or more U.S. and foreign patents and/or pending patent applications held by Polycom, Inc.

PN 3725-18012-001A (12/2007)

1.0

© 2007 Polycom, Inc. All rights reserved.

Polycom Inc.  
1765 West 121st Avenue  
Westminster, CO 80234-2301 U.S.A.

No part of this document may be reproduced or transmitted in any form or by any means, electronic or mechanical, for any purpose, without the express written permission of Polycom, Inc. Under the law, reproducing includes translating into another language or format.

As between the parties, Polycom, Inc. retains title to, and ownership of, all proprietary rights with respect to the software contained within its products. The software is protected by United States copyright laws and international treaty provision. Therefore, you must treat the software like any other copyrighted material (e.g. a book or sound recording).

Every effort has been made to ensure that the information in this manual is accurate. Polycom, Inc. is not responsible for printing or clerical errors. Information in this document is subject to change without notice.

---

# Contents

## **Restoring Original IBM® Lotus® Domino® Server and IBM Lotus Notes® Capabilities**

Restore Original IBM Lotus Domino Server and IBM Lotus Notes Capabilities .....	1-2
Verify That Original Capabilities Are Restored .....	1-3



---

# Restoring Original IBM<sup>®</sup> Lotus<sup>®</sup> Domino<sup>®</sup> Server and IBM Lotus Notes<sup>®</sup> Capabilities

This chapter describes how to restore original IBM<sup>®</sup> Lotus<sup>®</sup> Domino<sup>®</sup> server and IBM Lotus Notes<sup>®</sup> capabilities after you install the ReadManager<sup>®</sup> Scheduling Plugin for IBM Lotus Notes. It includes the following topics:

- [“Restore Original IBM Lotus Domino Server and IBM Lotus Notes Capabilities”](#) on page 2
- [“Verify That Original Capabilities Are Restored”](#) on page 3

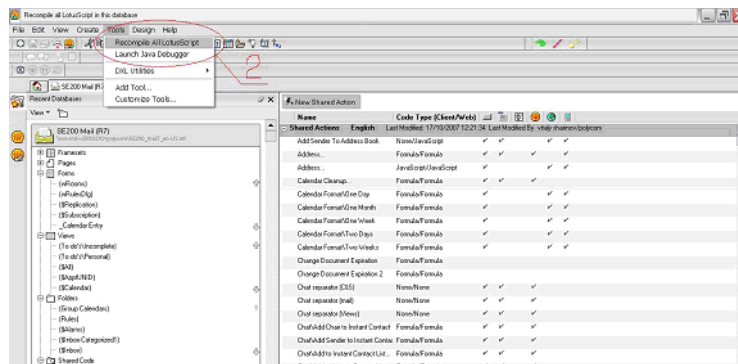
Users can run IBM Lotus Notes as either a desktop client or a web client. When it runs as a web client, all software must reside on the IBM Lotus Domino server. After you install the ReadManager Scheduling Plugin for IBM Lotus Notes, you must restore the original IBM Lotus Domino server and IBM Lotus Notes capabilities by:

- Installing and resigning the **SE200\_mail7\_en-US.ntf** database template. The certificate authority (CA) digital certificate for the template scripts were signed by Polycom, but now must be resigned by your organization. You cannot access the web client unless they are resigned.
- Apply the database template to your IBM Lotus Notes databases.

## Restore Original IBM Lotus Domino Server and IBM Lotus Notes Capabilities

### To restore original IBM Lotus Domino Server and IBM Lotus Notes capabilities

- 1 Download the **SE200\_mail7\_en-US.ntf** file and follow standard IBM Lotus Notes procedures to install it on the IBM Lotus Domino server where the ReadManager Scheduling Plugin for IBM Lotus Notes is to be installed.
- 2 On the same server, open IBM Lotus Domino Designer 7 and log in as a user with sufficient rights to run scripts from the server.
- 3 Select **File > Database > Open** and open **SE200\_mail7\_en-US.ntf**.
- 4 Click any design element or group of elements of this template.
- 5 Select **Tools > Recompile All LotusScript**.

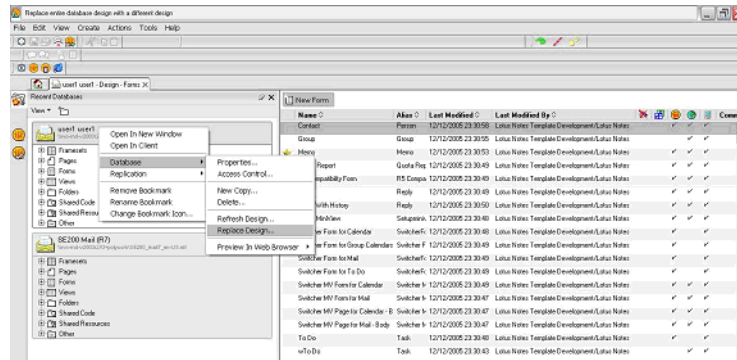


- 6 Ensure that the scripts recompile successfully.

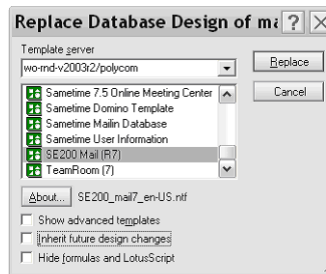
### Note

- 7 Select **Database > Open** and open the list of mail databases.
- 8 Highlight the mail database that you wish to use. Optionally, copy and rename it. Then open it.

- 9 Right-click the opened database bookmark and select **Database > Replace Design**.



- 10 Select **SE200\_mail7\_en-US.ntf**. Optionally (but recommended), check **Inherit future design changes**. Then click **Replace**.



- 11 Close IBM Lotus Domino Designer 7.

## Verify That Original Capabilities Are Restored

### To verify that original capabilities are restored

- 1 From the user's desktop:
  - a Set up the RADIManager Scheduling Plugin for IBM Lotus Notes as a desktop client.
  - b Log into the IBM Lotus Notes desktop client as that user.
  - c Verify that IBM Lotus Notes works normally.
- 2 From a browser:
  - a Log into the IBM Lotus Notes web client as that user.
  - b Verify that IBM Lotus Notes works normally.

