

Setting up the Intel® TeamStation™ System 384

5 Gather ISDN Information You'll Need to Know†:

- ISDN PROTOCOL AND SWITCH TYPE
 - AT&T 5ESS CUSTOM
 - AT&T G3 PBX CUSTOM
 - ETSI (Europe, Australia, Singapore and other Asian countries)
 - NATIONAL ISDN 1 (NI-1)
 - NORTEL DMS-100 CUSTOM
 - NTT INS64 (Japan)

- ISDN LINE PHONE NUMBERS:
(Line 1 provisioned as IOC code J, other lines as IOC code I; or all three lines as EZ-ISDN-1)

Line 1	#1	SPID	TYPE	(DATA / VOICE, DATA, VOICE)
	#2	SPID	TYPE	(DATA / VOICE, DATA, VOICE)
Line 2	#3	SPID	TYPE	(DATA / VOICE, DATA, VOICE)
	#4	SPID	TYPE	(DATA / VOICE, DATA, VOICE)
Line 3	#5	SPID	TYPE	(DATA / VOICE, DATA, VOICE)
	#6	SPID	TYPE	(DATA / VOICE, DATA, VOICE)

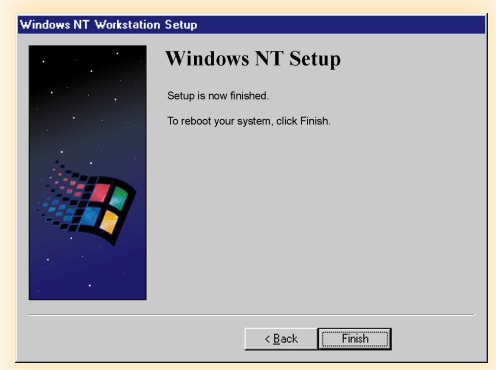
† Information about your ISDN connections is available from your ISDN service provider.

6 Power On & Configure Windows* NT*

1. Insert the Intel TeamStation System Setup Diskette.
2. Turn on the system
3. When prompted, insert the Intel TeamStation System Setup CD and press any key to copy system files to the Intel TeamStation. This usually takes about five minutes.
4. When prompted, remove the Setup Diskette, but leave the Setup CD in the CD-ROM drive. Then press any key to restart the system.
5. When you see the Welcome dialog box for the Windows NT Setup Wizard, click Next.



6. Continue with these steps to install Windows NT:
 - Confirm that you agree with the license agreement. Then click Next.
 - Enter the name and organization and click Next.
 - Enter the OEM number from the Certificate of Authenticity included with the Windows NT manual. Then click Next.
 - Enter and confirm a password for the system administrator account. Then click Next.
 - Click Finish to restart the system.



7 Configure the Intel TeamStation System

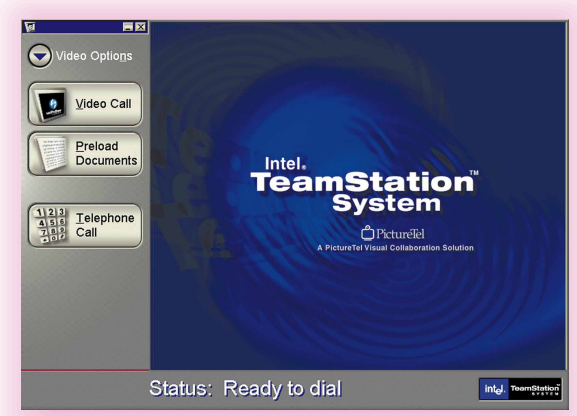
1. Double-click the Intel TeamStation System Setup icon on the desktop.
2. Enter the appropriate information on the following screens:



- Enter the desired computer name.
- The serial number is on this side of the poster in the lower right-hand corner.

8 Make a Video Call

- After the system boots, press Ctrl+Alt+Del to log on.
- The TeamStation System starts and you're ready to make a call.



9 Run AdminTools

Now run AdminTools to fine tune your system preferences (from the Start menu, select Intel TeamStation System Administrator, then Intel TeamStation System AdminTools). See the *Administrator's Guide* for information about using AdminTools.

Use information from Step 5.

Enter numbers you know you'll be using with the TeamStation System.

Click Finish, then click Yes to restart the system.

Your serial numbers:



Please peel off your serial number stickers and keep them in a safe place, such as your registration card, *Administrator's Guide* or CD case.

See the other side for hardware setup instructions.