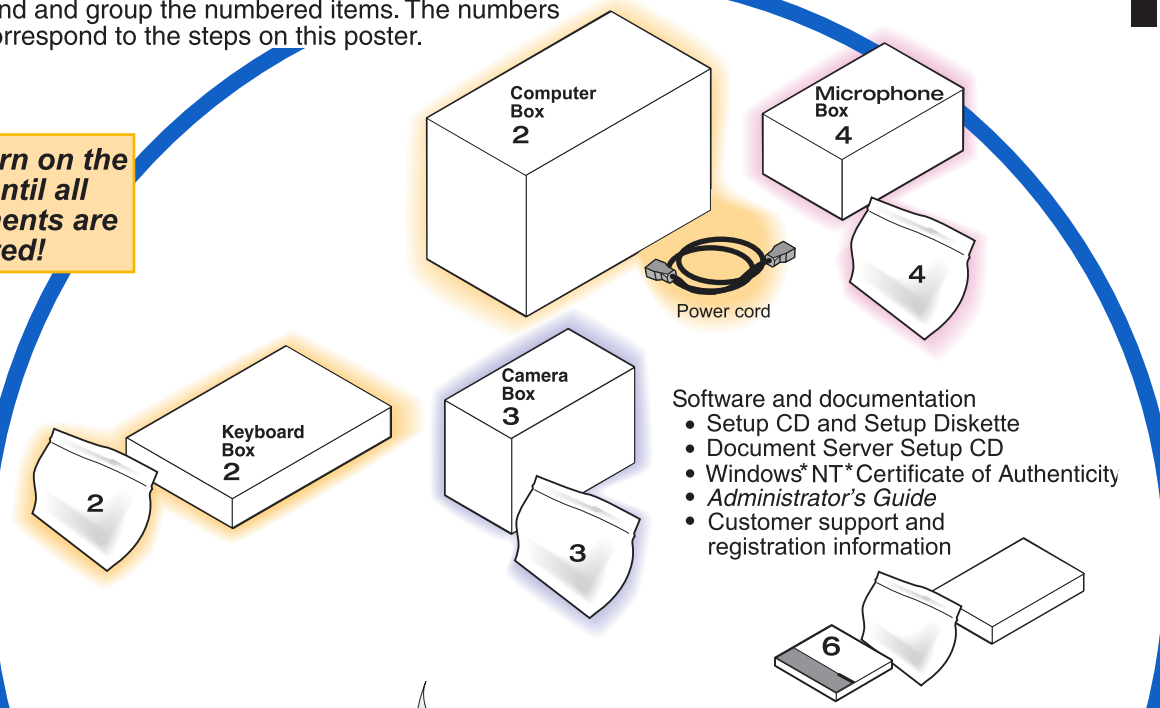


1

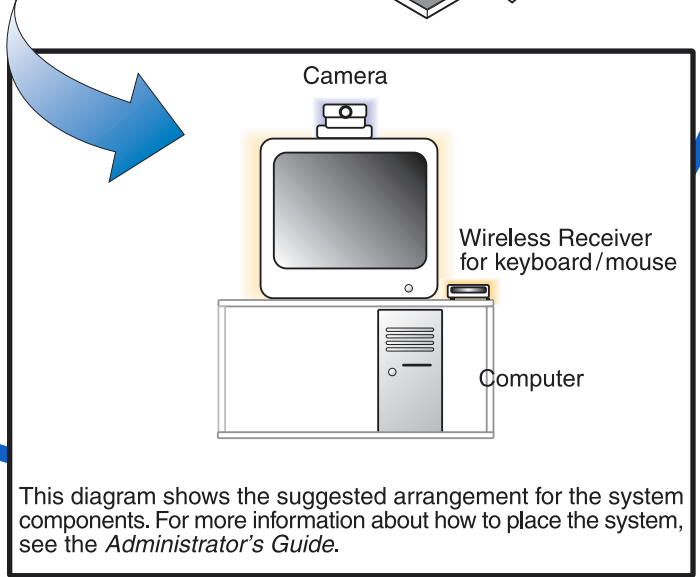
Unpack

Find and group the numbered items. The numbers correspond to the steps on this poster.

Don't turn on the power until all components are connected!



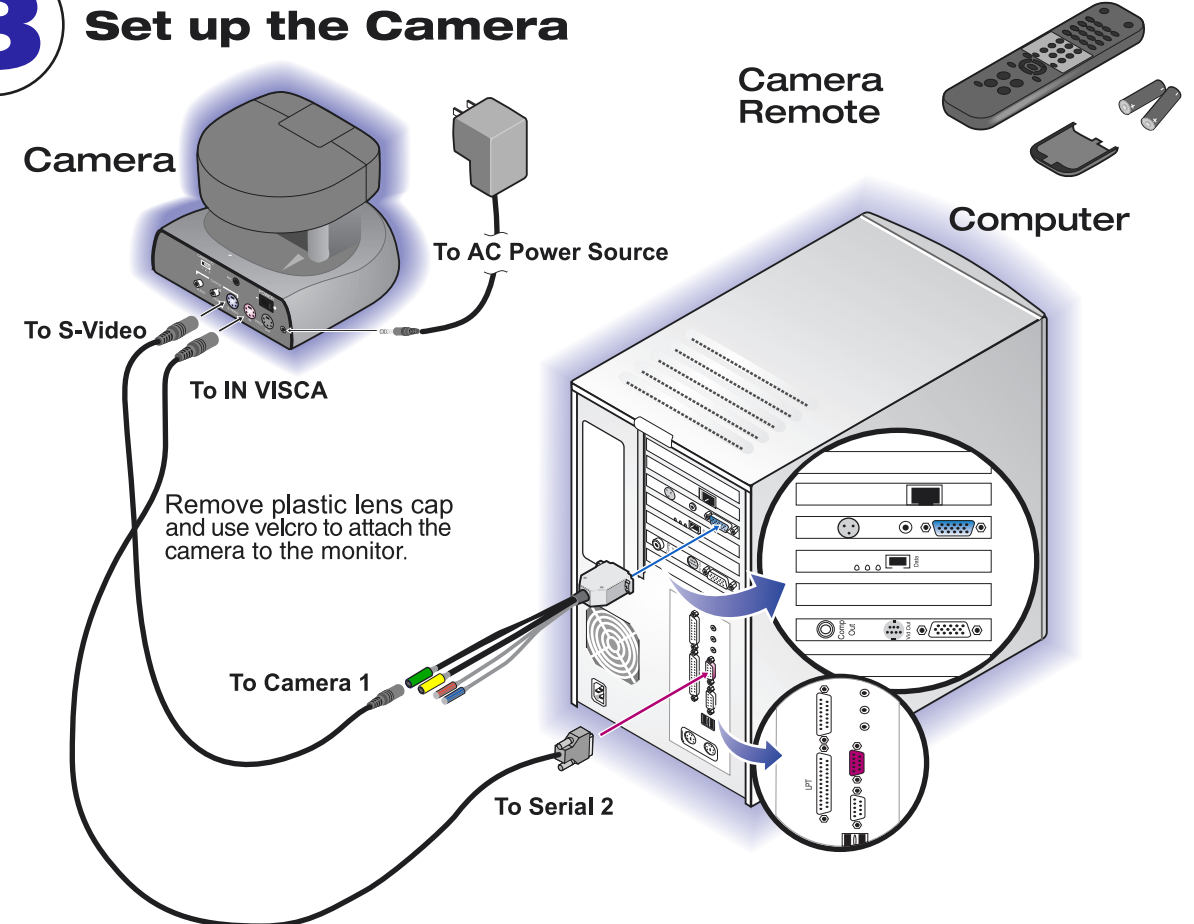
WARNING
This equipment must be properly attached to a grounded (earthed) power outlet to protect the telecommunication network.



This diagram shows the suggested arrangement for the system components. For more information about how to place the system, see the Administrator's Guide.

3

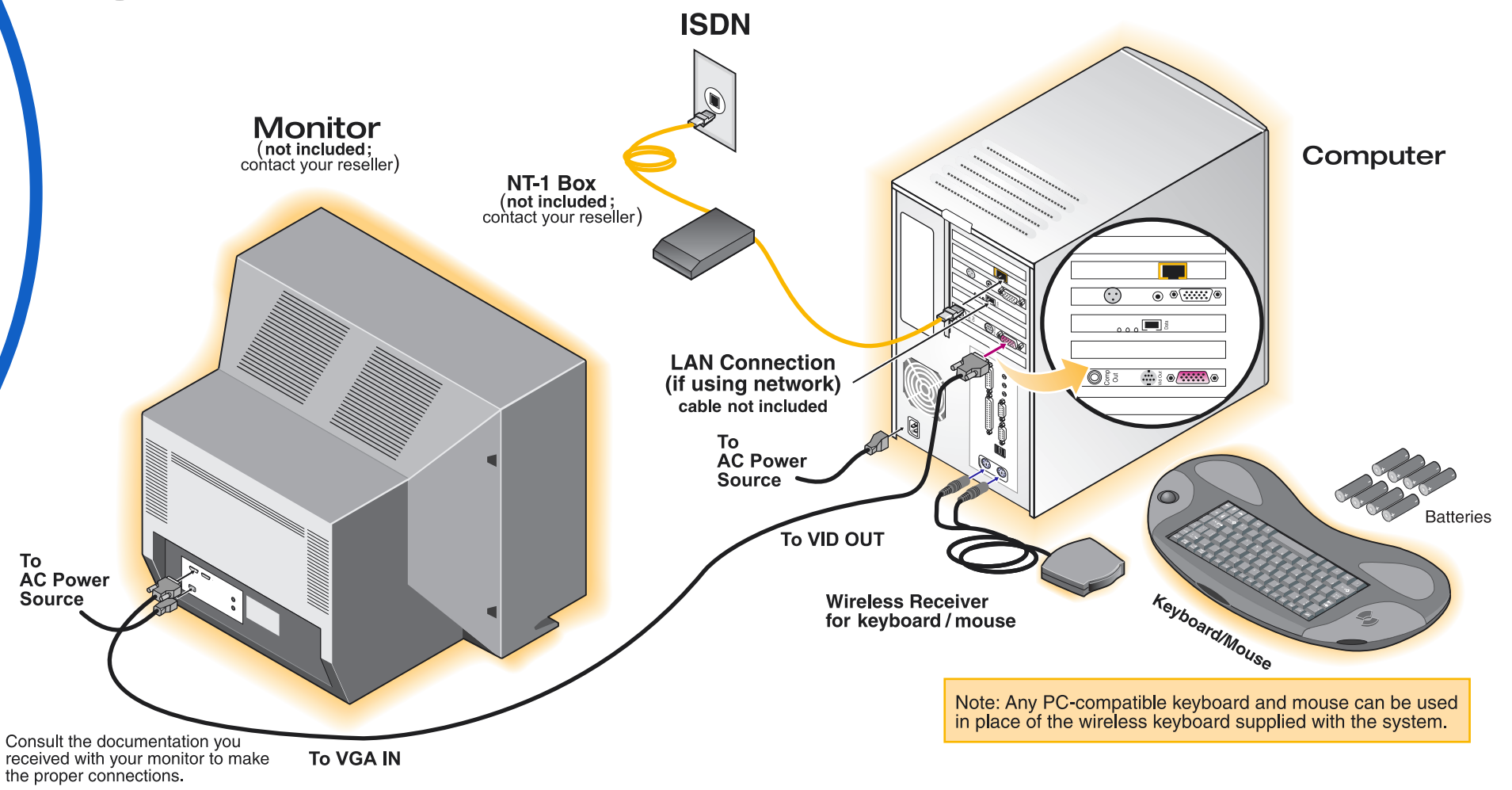
Set up the Camera



Setting up the Intel® TeamStation™ System 128

2

Set up the Computer and Monitor

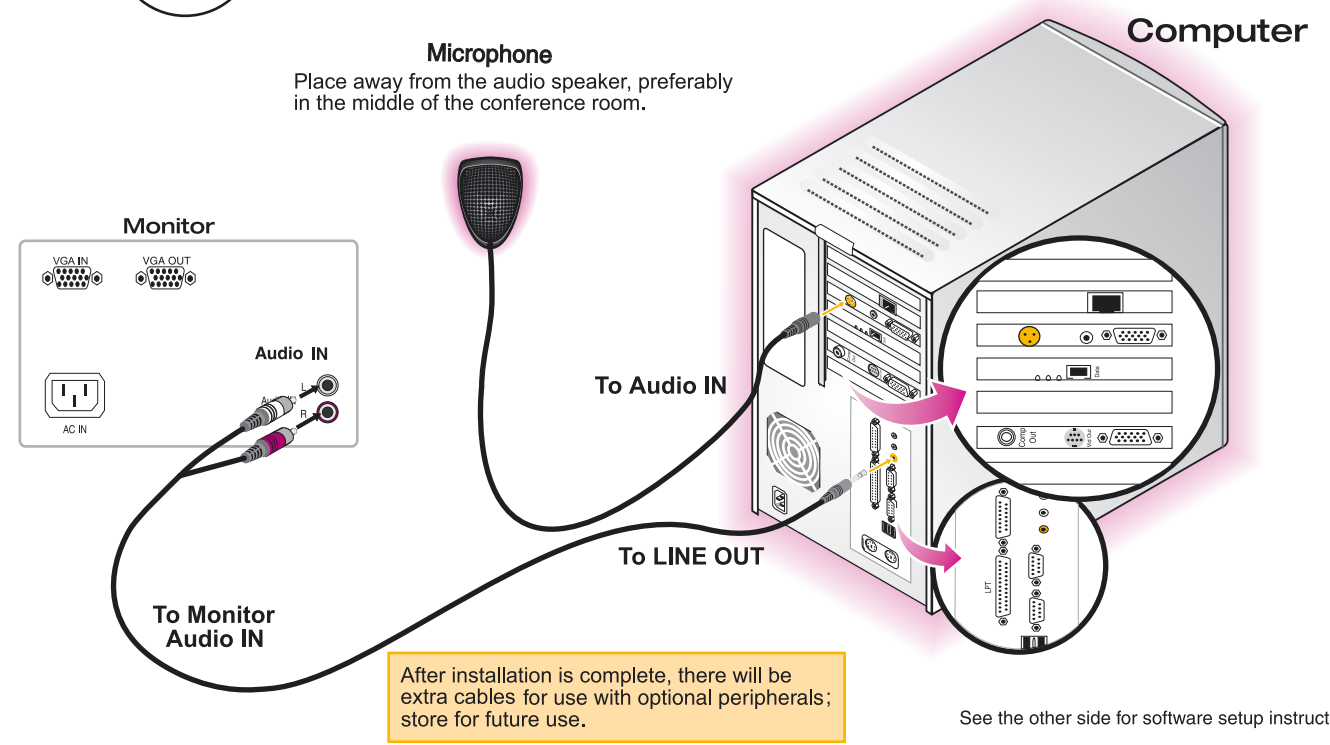


Note: Any PC-compatible keyboard and mouse can be used in place of the wireless keyboard supplied with the system.

Consult the documentation you received with your monitor to make the proper connections.

4

Set up the Audio



After installation is complete, there will be extra cables for use with optional peripherals; store for future use.

See the other side for software setup instructions.

