



Overview

This section describes the basic requirements necessary to upgrade your Live200 system to Live LAN 3.1. For more detailed information on the LiveLAN 3.1 system requirements, please refer to the online *LiveLAN Installation Guide*.

Before You Begin

Before you attempt to upgrade from the Live200 system to LiveLAN 3.1, make sure that you have the following:

- A Windows 95 PC that meets all system requirements identified in the System Requirements section of this guide and the LiveLAN Installation Guide.
 - Live200 installed on your Windows 95 PC.
 - The Live200 to LiveLAN 3.1 Software Upgrade Kit.
 - All hardware peripherals (camera, microphone, cables and speakers) and the Live200 codec board from your Live200 system with LiveLAN 3.1. (You will be reusing these when you upgrade.)
-

Guidelines and Recommendations

Please review the following information before upgrading from the Live200 system to LiveLAN 3.1.

- **Software Upgrade** -- The Live200 to LiveLAN 3.1 upgrade is a software-only upgrade. No additional hardware, other than what is provided with your Live200 product kit, is required. Your Live200 hardware investment is protected with LiveLAN 3.1.
 - **Live200 Codec Board** -- LiveLAN 3.1 works with the Live200 codec board currently installed in your PC. No other board is required.
 - **Plug and Play Drivers** -- Live200 and LiveLAN 3.1 use different Plug and Play driver stacks. Currently, Windows 95 allows only one stack to be registered per Plug and Play Device on the PCI bus at one time. To run LiveLAN 3.1 on your PC, you must remove the Live200 Plug and Play drivers.
-

System Requirements

To upgrade your Live200 system to LiveLAN 3.1, your Windows 95 PC must meet the minimum hardware and software requirements. You will not be able to successfully install and use LiveLAN 3.1 if you fail to meet the necessary requirements. Before you upgrade your Live200 system to a LiveLAN 3.1, be sure you have the following:

- A Windows 95 or Windows 98 operating system.
- A Network Interface card running Microsoft's TTCP/IP stack (Winsock 1.1 or greater).
- A Pentium, Pentium Pro, or Pentium II single processor or equivalent running at 133 MHz or faster.
- 30 MB of available hard disk space for installation.
- 32 MB of RAM and 256 KB of cache.
- An SVGA monitor.
- A 32-bit PCI graphics board with 16-bit high color depth and 2 MB of video memory. Boards with 2D video acceleration and fast video memory (such as VRAM) are recommended.
- One available PCI bus slot for the Live200 or Live200 Plus board.
- A Live200 or Live2000 Plus hardware kit. This is the hardware sold as part of a LiveLAN kit, or used in PictureTel's Live200 1.5 for Windows 95 or Live200 for Windows NT. Only the PCI version (Live200p or Live2000 Plus) is supported.

Upgrading

This section explains how to upgrade from a Live200 videoconferencing system to a LiveLAN 3.1 system.

Before You Begin

To upgrade your Live200 system to LiveLAN 3.1, you must first do the following:

- [Determine the version of Live200 installed on your PC](#)
- [Remove the Live200 application software](#)
- [Remove the Live200 Plug and Play drivers](#)
- [Install the LiveLAN 3.1 Plug and Play drivers](#)
- [Install the LiveLAN 3.1 application software](#)

Determining Your Version Of Live200

To determine the version of Live200 currently installed on your Windows 95 PC refer to the Live200 version information in the Live200 Release Notes (readme.txt file). The version information can also be accessed from the Help menu on the Live200 application's main window while the application is running.



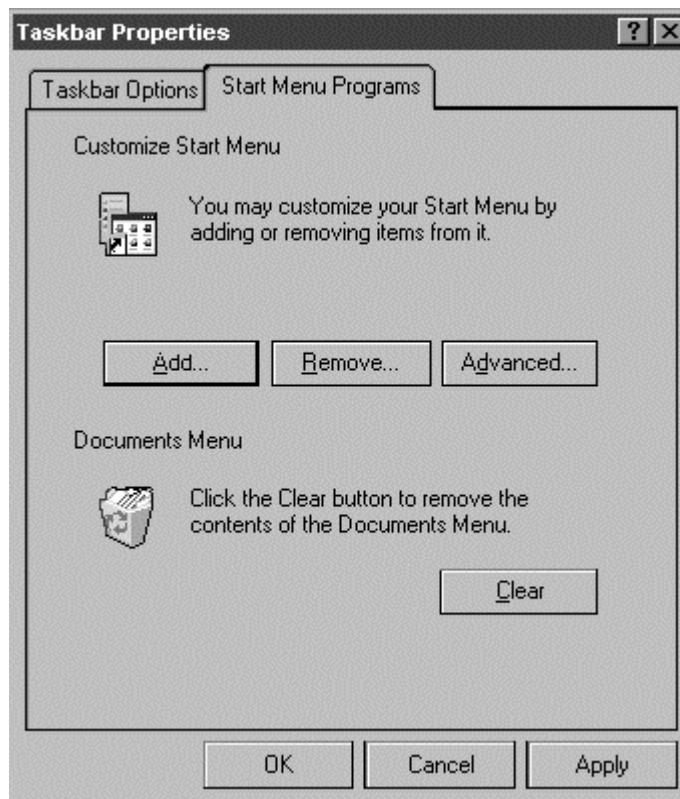
To display the Live200 version information, select *Help > About PictureTel Live200* .

Removing the Live200 Application Software

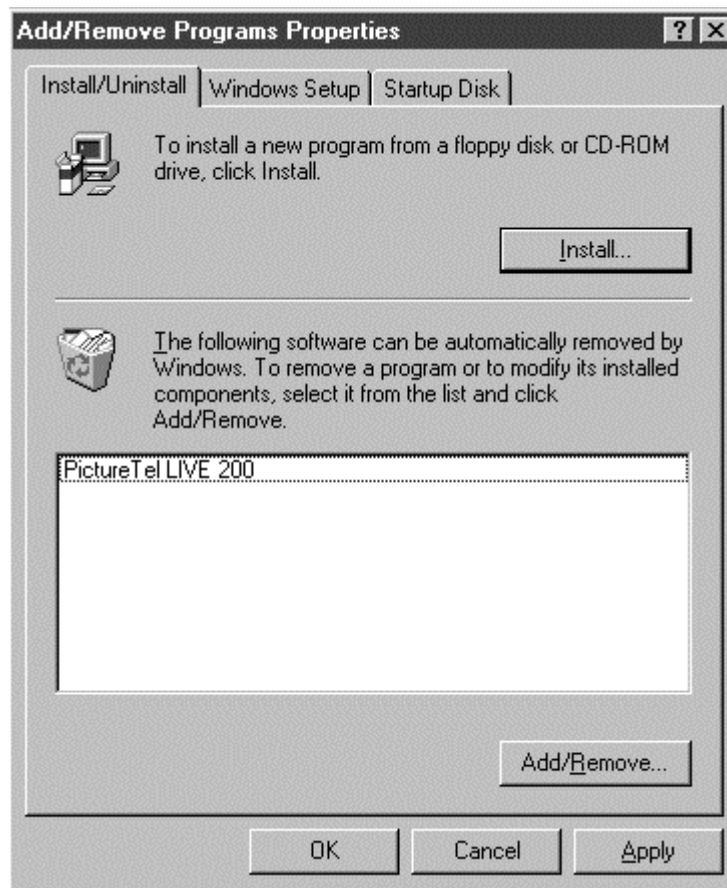
To remove the Live200 application software from your PC:

1. Start your PC and run Windows 95.
 - If your Live200 application does not launch automatically when Windows 95 is started then go to step 6.
 - If Live200 did launch automatically, then there is a Live200 shortcut in your Startup folder that must be removed.

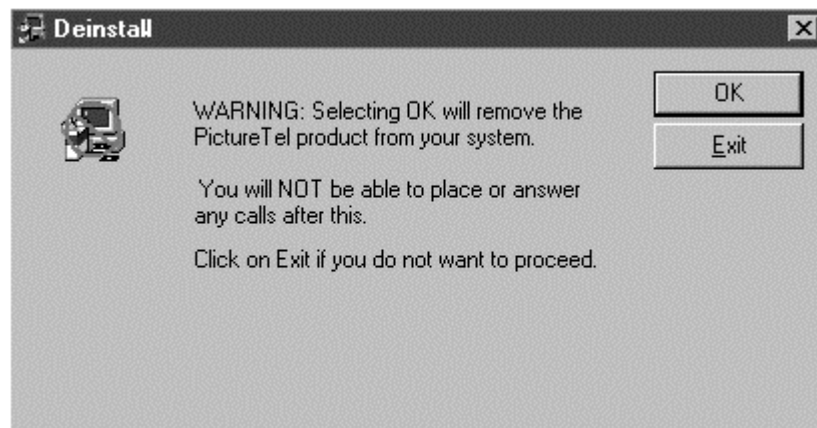
To remove the shortcut from the Startup folder, click the Start button from the Windows 95 desktop and select Settings > Taskbar. The Taskbar Properties dialog box appears.



2. Click the Start Menu Programs tab and then click Remove. The Remove Shortcuts/Folders dialog box appears.
3. Locate and select the Live200 Program in the Startup Folder.
4. Click Remove to delete the Live200 shortcut from the start menu.
5. Click the Start button from the Windows 95 desktop to remove the Live200 application software from your system.
6. Select Settings > Control Panel.
7. In the Control Panel window, double click the Add/Remove Programs icon. The Add/Remove Programs Properties window appears.



8. Select PictureTel Live200 from the listbox.
9. Click the Add/Remove button. The following dialog box appears.



10. Click OK to remove the Live200 application from your system.
11. The Add/Remove Programs Properties window reappears showing that the Live200 application is removed from the list.
12. Click OK.

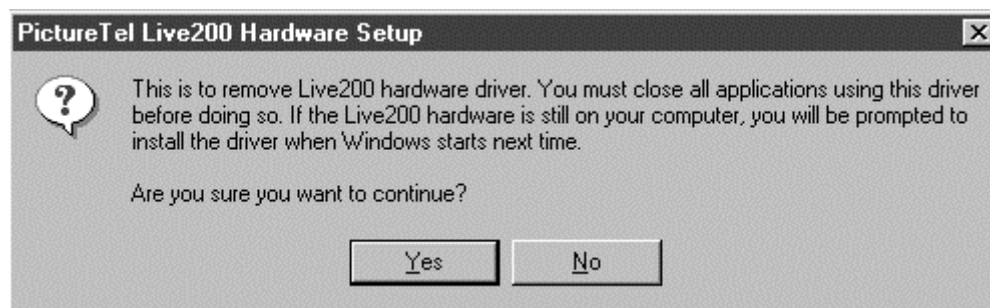
Removing The Live200 Plug and Play Drivers

You must remove the Live200 application software before you can remove (deinstall) the Live200 Plug and Play drivers from your PC. To do this:

1. Start your PC and run Windows 95.
2. Click the Start button from the Windows 95 desktop.
3. Click Run from the Start menu. The Run dialog box appears.
4. Type Remove200Driver then click OK. The Live 200 Hardware Setup dialog box appears.



5. Click Yes to continue the deinstallation process.



When the system software has been removed from your system, a dialog box appears asking if you want to restart your computer.

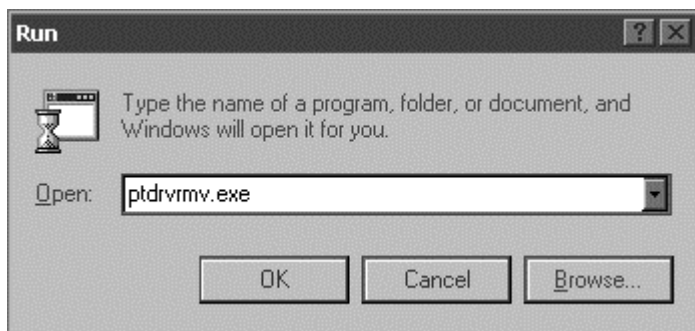


6. Click Yes to restart your computer and complete the deinstallation process. If you are using Live200 version 1.0 or version 1.1, then proceed to step 7. If you removed Live200 version 1.5, then skip the following steps and go to the next section, "Installing the LiveLAN 3.1 Plug and Play Drivers and Application Software."

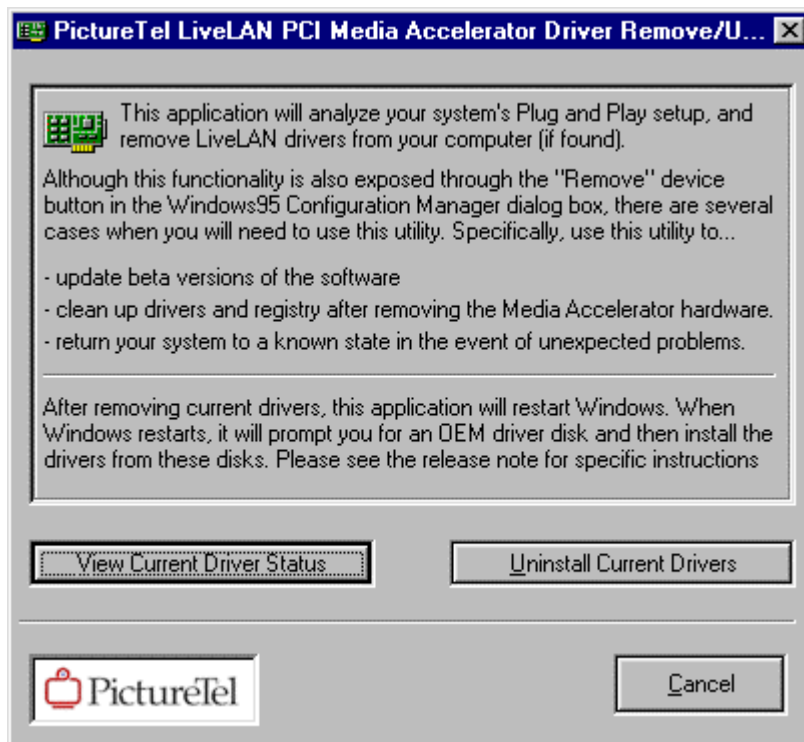
Note: For Live200 versions 1.0 and 1.1, you must also run PictureTel's proprietary LiveLAN 3.1 Plug and Play Driver Removal utility program, PTDRVRMV (*ptdrvmv.exe*), before installing the LiveLAN 3.1 Plug and Play drivers on your Windows 95 PC. This program will ensure that the Plug and Play drivers for these versions of Live200 are removed cleanly.

7. To run the *PTDRVRMV* program, insert the LiveLAN 3.1 CD ROM into the appropriate drive on your PC.

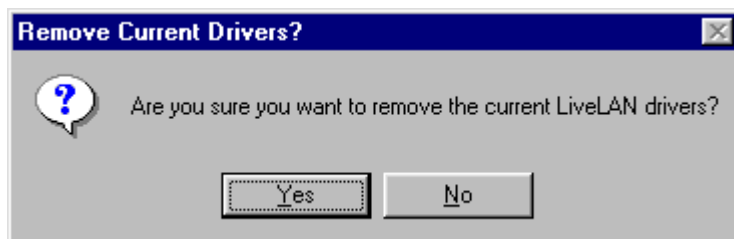
8. Click the *Start* button from the Windows 95 desktop.
9. Click Run... from the Start menu. The Run window appears.
10. Type ptdrvrmv.exe in the window's text box or use the Browse button to navigate to the \drivers directory of the LiveLAN CD ROM and select ptdrvrmv.exe.



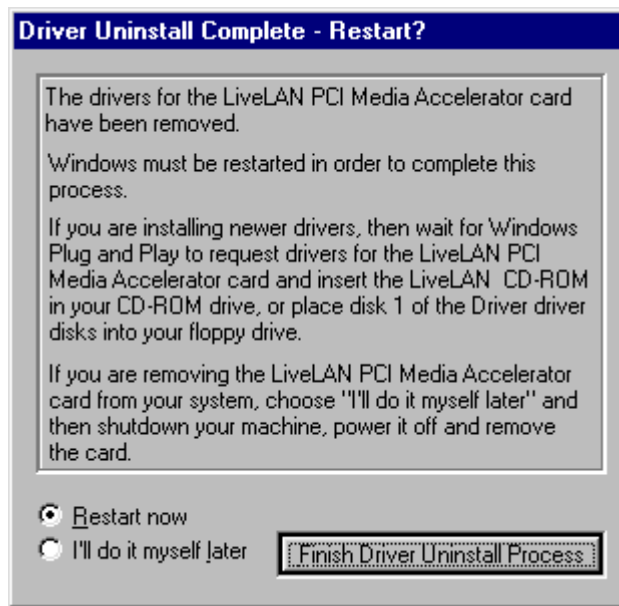
11. Click OK when you have selected the PictureTel Plug and Play Driver Remove/Update program (*ptdrvrmv.exe*). The PictureTel LiveLAN PCI Media Accelerator Driver Remove/Update screen appears.



12. Click *Uninstall Current Drivers* to finish removing the Live200 drivers from your system. The following window appears.



13. Click Yes. After the drivers are removed, the following window appears



14. Click Finish Driver Uninstall Process to automatically restart Windows 95. When your system is restarted, you can install the LiveLAN 3.1 Plug and Play drivers.

Installing The LiveLAN 3.1 Plug and Play Drivers and Application Software

To install the LiveLAN 3.1 Plug and Play Drivers and application software on your Windows 95 PC, please refer to the LiveLAN Installation Guide which was provided with your Live200 to LiveLAN 3.1 Upgrade kit. Refer to the sections in Chapter 3 titled, "Installing the LiveLAN PCI Plug and Play Drivers," and "Installing the Application Software."

Note: The Live200 application software and the Live200 Plug and Play Drivers must be removed before you install the LiveLAN 3.1 Plug and Play drivers.



feedback@pictel.com

Copyright © 1998, [PictureTel Corporation](#). All rights reserved.

[\[Top\]](#) [\[Bottom\]](#) [\[Readme\]](#) [\[PictureTel Home\]](#)