



Installing the Microsoft Network Driver Interface

Overview

This guide explains how to install the PictureTel Live200 Microsoft Network Driver Interface (NDIS) software you have downloaded from PictureTel's Web site. You need to unzip the lv200ndis.exe you download from the Web site by double-clicking the file to activate WinZip Self-Extractor. Unzipping the executable file creates the Lv200NDIS directory on your hard drive.

When you are not in a videoconference, you can use the Live200 board to access the Internet and gain remote access to other systems at speeds of 64 kbps or 128 kbps. The Live200 uses the Microsoft Network Driver Interface Service (NDIS) to act like a WAN network interface card. Click on the following links for additional information:

- [Establishing an Internet Access Account](#)
- [Checking for Windows 95 components](#)
- [Installing the Windows 95 components](#)
- [Installing the Live200 NDIS driver](#)
- [Making a new Dial-Up connection with Live200](#)
- [Configuring the Live200 system as a Dial-Up host](#)

Establishing an Internet Access Account

You need an Internet access account to access the Internet through your Live200. Your Internet Service Provider must support ISDN at 64 kbps running PPP. When you call an Internet Service Provider, make sure you get the following information:

- User name and password
- Access phone number
- Host name and domain name
- Domain Name Server (DNS) server address
- IP address and subnet mask

- DNS search order
 - Gateway address
 - Authentication procedure (whether you need a terminal window to log on)
-

Checking for the Windows 95 Components

You must have the following Windows 95 components on your computer before you can install the Live200 NDIS driver. Click the links for additional information about these components.

- [Dial-Up Networking](#)
- [TCP/IP](#)
- [Windows 95 ISDN 1.1 Accelerator Pack](#)
- [Microsoft® Plus! for Windows® 95](#), Dial-Up Networking Server component (if you want to configure the Live200 as a dial-up host)

If you need to install any components, see the instructions in the appropriate sections. If you have these components installed, refer to [Installing the Live200 NDIS Driver](#).

Checking for Dial-up Networking

To see if your computer has Dial-Up Networking:

1. Click Start from the Windows 95 desktop.
2. Click Settings from the Start menu.
3. Click Control Panel from the Settings menu.
4. Double-click Network from the Control Panel.
The Network dialog box appears with the Configuration sheet displayed.
5. Check to see if Dial-Up Adapter is listed under Network Components Installed.

If Dial-Up Adapter is listed, check to see if your computer has [TCP/IP](#). If Dial-Up Adapter is not listed, continue checking your computer for the other Windows 95 components and then, go to [Installing the Dial-Up Adapter](#).

Checking for TCP/IP

To see if your computer has TCP/IP:

1. Click Start from the Windows 95 desktop.
2. Click Settings from the Start menu.
3. Click Control Panel from the Settings menu.
4. Click Network from the Control Panel.
The Network dialog box appears with the Configuration sheet displayed.
5. Check to see if TCP/IP or TCP/IP->Dial-Up Adapter is listed.

If TCP/IP is listed, check to see if your computer has the [ISDN Accelerator Pack](#). If TCP/IP is not listed, continue checking your computer for the other Windows 95 components and then, go to [Installing TCP/IP](#).

Checking for ISDN 1.1 Accelerator Pack

To see if your computer has ISDN Accelerator Pack:

1. Click Start from the Windows 95 desktop.
2. Click Settings from the Start menu.
3. Click Control Panel from the Settings menu.
4. Double-click Add/Remove Programs Properties from the Control Panel.
5. Click the Windows Setup tab from the Add/Remove Programs Properties dialog box.
6. Click Communications from the Components list and click the Details button.

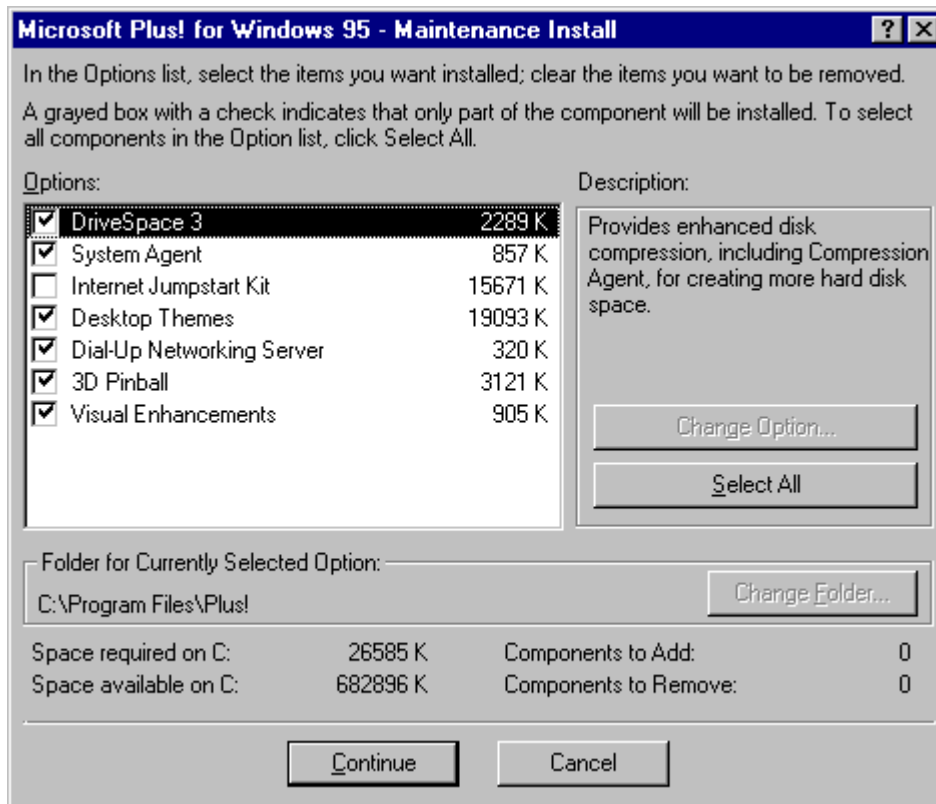
If ISDN 1.1 Accelerator Pack is listed in the Components list, and your computer has all of the other Windows 95 components, go to [Installing the Live200 NDIS Driver](#). If ISDN 1.1 Accelerator Pack is not listed, go to [Installing ISDN 1.1 Accelerator Pack](#).

Checking for Microsoft Plus! for Windows 95

If Microsoft Plus! for Windows 95 is installed on your computer, the word Plus appears on the Windows start-up screen. If the word Plus does not appear on the Windows start-up screen, go to [Installing Microsoft Plus! for Windows 95](#) first.

To see if the Dial-Up Networking Server component of Microsoft Plus! for Windows 95 is installed on your computer:

1. Click Start from the Windows 95 desktop.
2. Click Settings from the Start menu.
3. Click Control Panel from the Settings menu.
4. Double-click Add/Remove Programs Properties from the Control Panel.
5. Click Microsoft Plus for Windows 95 from the list and click the Add/Remove button.
The Microsoft Plus for Windows 95 Setup screen appears.
6. Click the Add/Remove button.
The Maintenance Install screen appears.



7. Check to see if Dial-Up Networking Server is checked. Click Cancel and exit the setup program.

If Dial-Up Networking Server is checked, and your computer has all of the other Windows 95 components, go to [Installing the Live200 NDIS Driver](#). If Dial-Up Networking Server is not checked, go to [Installing Microsoft Plus! for Windows 95](#).

Installing the Windows 95 Components

You need your Windows 95 CD to install the Dial-Up Networking, TCP/IP, and Microsoft Plus! for Windows 95 components. Click the following links to access install instructions. If you need additional information about installing components, you can refer to the Windows 95 online help.

[Dial-Up Networking](#)

[TCP/IP](#)

[Windows 95 ISDN 1.1 Accelerator Pack](#)

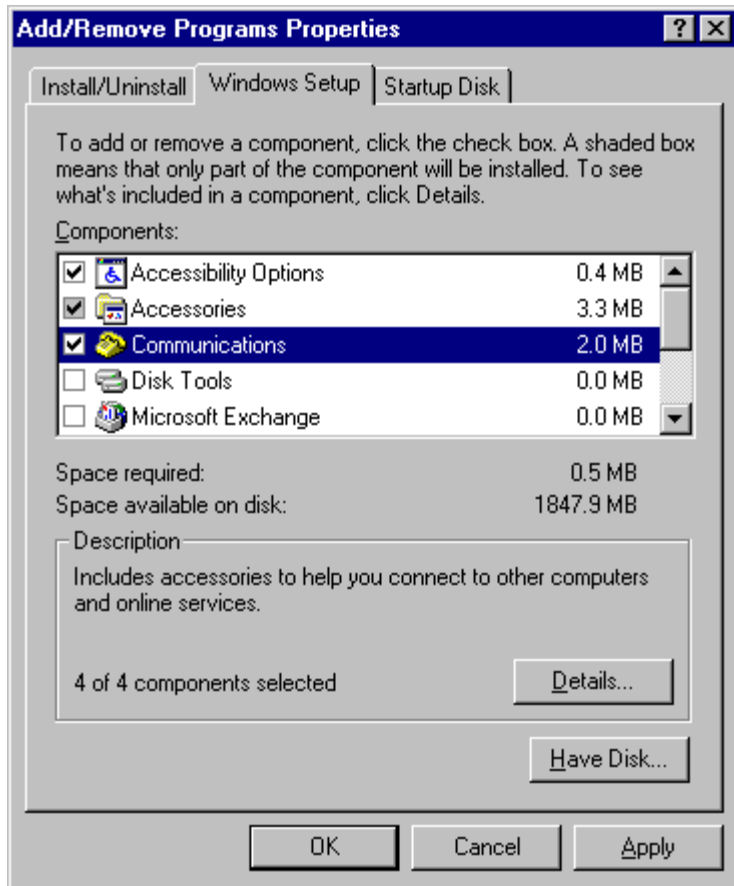
[Microsoft Plus! for Windows 95](#)

When you have finished installing the Windows 95 components, go to [Installing the Live200 NDIS Driver](#).

Installing Dial-Up Networking

To install Dial-Up Networking:

1. Click Start from the Windows 95 desktop.
2. Click Settings from the Start menu.
3. Click Control Panel from the Settings menu.
4. Double-click Add/Remove Programs from the Control Panel.
5. Click the Windows Setup tab from the Add/Remove Programs Properties dialog box.
The Add/Remove Programs Properties dialog box appears.



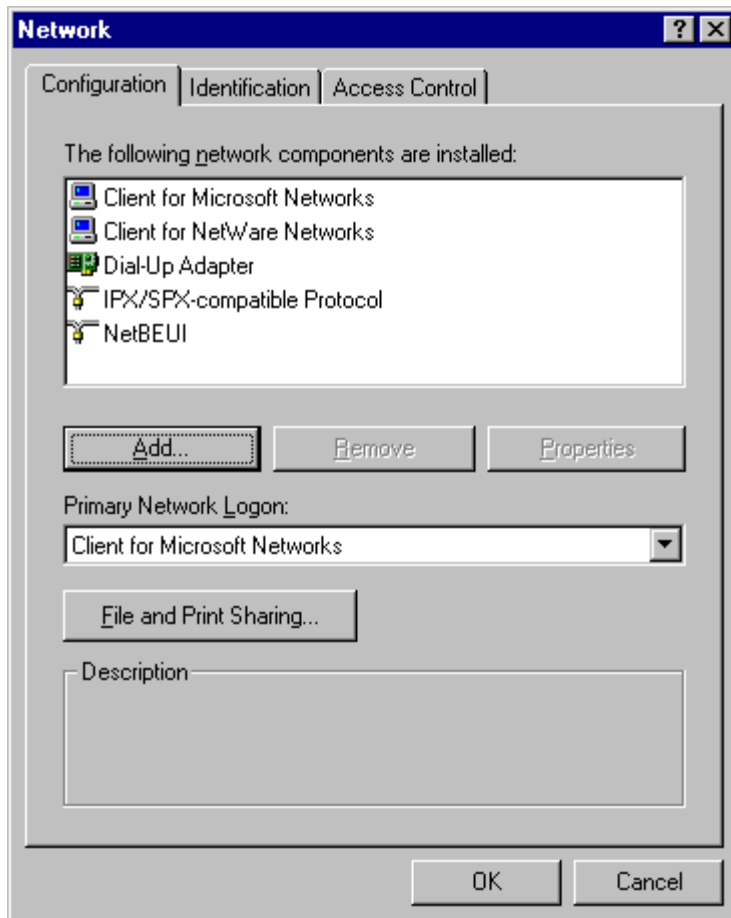
6. Click Communications from the Components list and click the Details button.
 7. Select the Dial-Up Networking check box and click OK.
 8. Click the Apply button from the Add/Remove Program Properties dialog box.
The Install from Disk dialog box appears.
 9. Type the path to `\Lv200NDIS\disk1` or click Browse to locate the path.
 10. Click OK.
 11. Restart your computer when you are prompted.
-

Installing TCP/IP

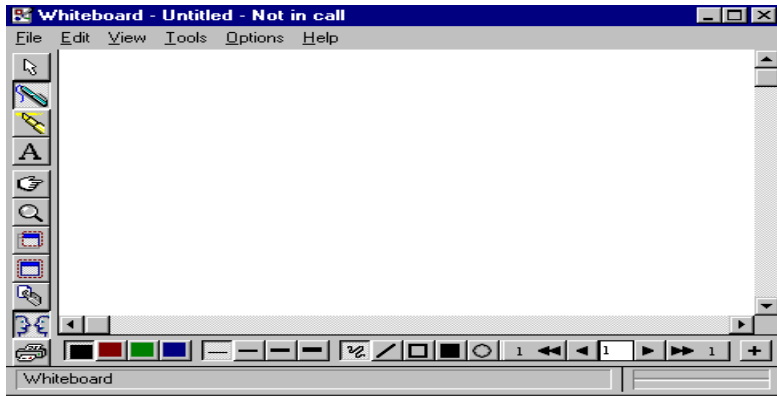
You need to know your IP address to install TCP/IP. If you do not know your IP address, ask your system administrator for assistance.

To install TCP/IP:

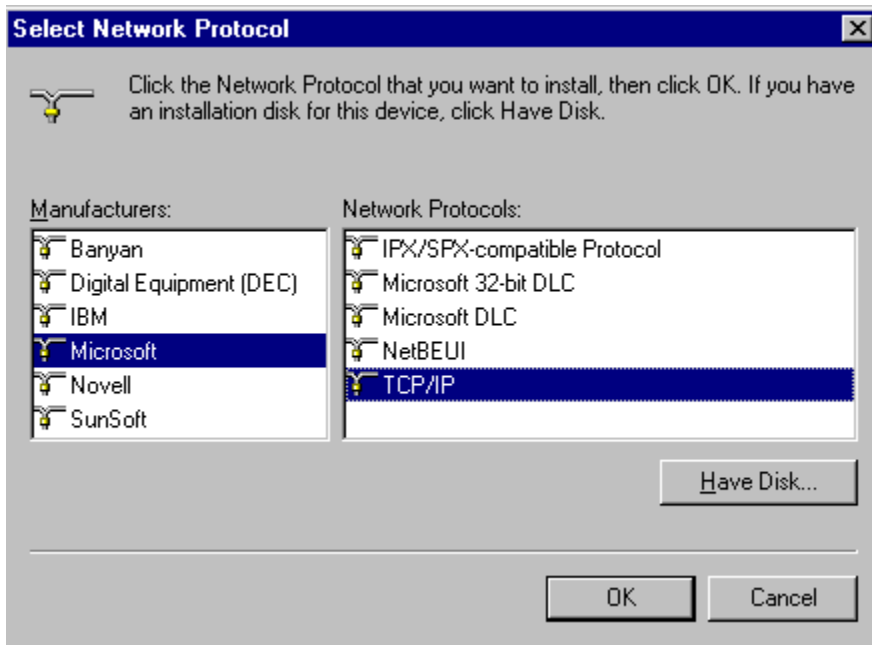
1. Click Start from the Windows 95 desktop.
2. Click Settings from the Start menu.
3. Click Control Panel from the Settings menu.
4. Double-click Network from the Control Panel.
The Network dialog box appears with the Configuration sheet displayed.



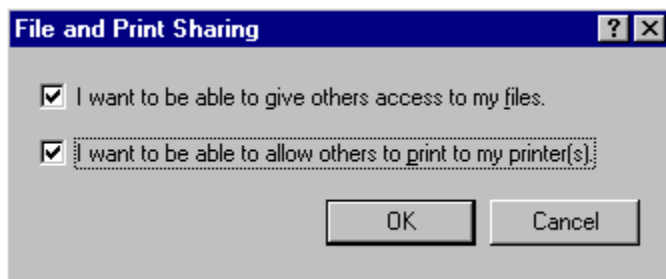
5. Click the Add button from the Configuration sheet.
The Select Network Component Type dialog box appears.



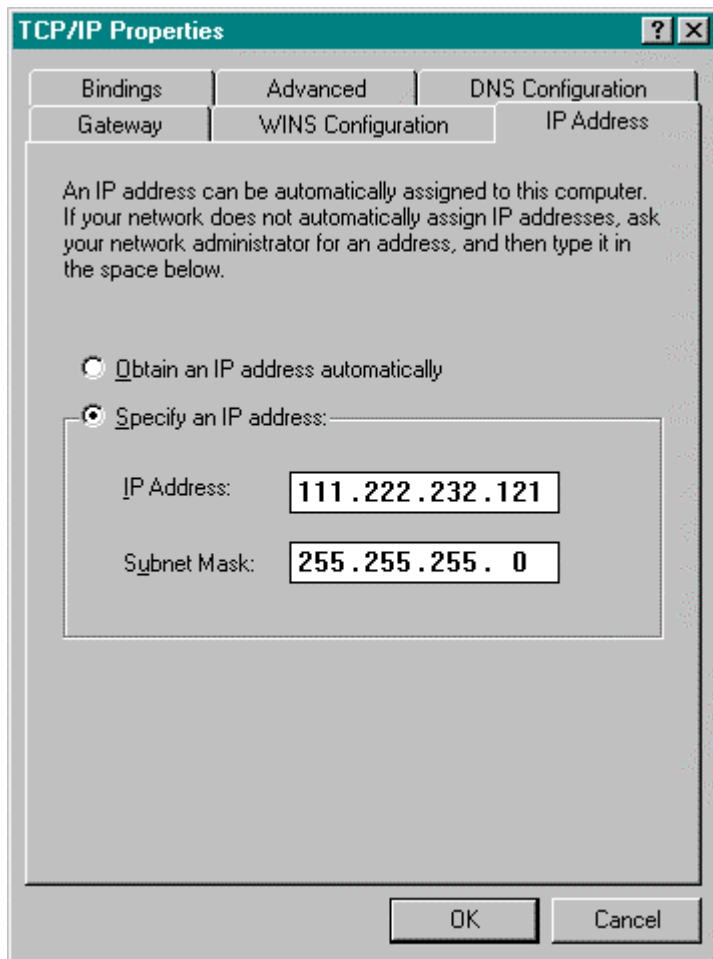
6. Click Protocol and click the Add button or double-click Protocol. The Select Network Protocol dialog box appears.



7. Click Microsoft from the Manufacturers list and TCP/IP from the Network Protocols list and click OK.
8. If you want to let other users access your files and printers, click File and Print Sharing from the Configuration sheet. The File and Print Sharing dialog box appears.



9. If you select both check boxes and click OK, other network users will have access to all of your files and printers. Caution: This might violate your network security. The Network dialog box appears with the Configuration sheet displayed.
10. Select TCP/IP from the Networks list and click the Properties button. The TCP/IP Properties dialog box appears with the IP Address sheet displayed.



11. Click **Obtain an IP address automatically** if your Internet Service Provider assigned you an IP address, and click **OK**.
or
Click **Specify an IP address**, enter your IP Address and Subnet Mask in the boxes provided, and click **OK**.
 12. Click OK and restart your computer when prompted.
-

Installing ISDN 1.1 Accelerator Pack

The ISDN 1.1 Accelerator Pack is bundled into a self-installing file called Msisdn11.exe. You can download this file from the Microsoft web site by pointing your browser to:

<http://www.microsoft.com/windows/getisdn/dload.htm>

To install ISDN 1.1 Accelerator Pack:

1. Download the Msisdn11.exe file to an empty folder.
 2. Double-click the Msisdn11.exe file.
 3. Follow the instructions on the screen.
-

Installing Microsoft Plus! for Windows 95

To install Microsoft Plus! for Windows 95:

1. Insert the Windows CD into your CD-ROM drive.
The Windows 95 CD ROM screen appears.
 2. Click Browse this CD.
 3. Double-click the Plus folder from the list.
 4. Double-click setup.exe and follow the instructions on the screen.
 5. Restart your computer when you are prompted.
-

Installing the Live200 NDIS Driver

You need the PictureTel Live200 Internet Access Drivers disk for the following procedure.

To install the NDIS driver:

1. Click Start from the Windows 95 desktop.
 2. Click Settings from the Start menu.
 3. Click Control Panel from the Settings menu.
 4. Double-click Add New Hardware from the Control Panel.
The Add New Hardware Wizard screen appears.
 5. Click Next.
 6. Click No when the install wizard asks you if you want Windows to search for your new hardware and click Next.
 7. Select Network Adapters from the Hardware types list and click Next.
The Select Device dialog box appears.
 8. Click the Have Disk button.
The Install from Disk dialog box appears.
 9. Type the path to locate \Lv200NDIS\disk17 or click Browse to locate the path.
 10. Click OK.
 11. Follow the instructions on the screen and accept the defaults.
 12. Restart your computer when prompted.
-

Making a New Dial-Up Connection with Live200

You can make a 1-channel, 64-kilobits per second (kbps) connection or, if your Internet Service Provider supports it, you can make a 2-channel 128-kbps connection. Steps 10 through 14 tell you how to make a 128-kbps connection. Make sure you have the telephone number of the server you are dialing into.

To make a dial-up connection with Live200:

1. Double-click My Computer from the Windows 95 desktop.
2. Double-click Dial-Up Networking from the My Computer window.
3. Double-click Make New Connection.
The Make New Connection dialog box appears.

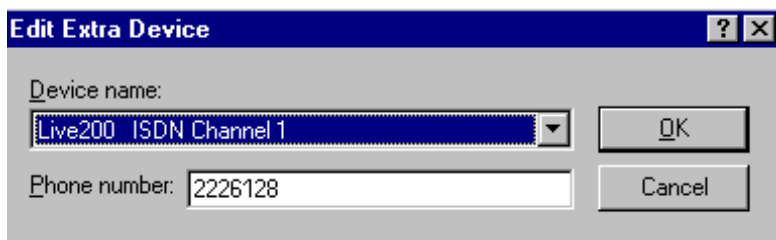
4. Type the name of the connection.
5. Click Live200 ISDN Channel 1 or Live200 ISDN Channel 2 from the Select a modem list and click Next.
6. Enter the telephone number of the server you want to dial into and click Next.
A window appears telling you that you have created a new Dial-Up networking connection.
7. Click Finish.
The Dial Up Networking window appears with the new connection icon you just created in it.
8. Click on the connection icon you created to highlight it and click the right mouse button.
9. Click Properties from the menu.
The properties dialog box for your connection appears with the General sheet displayed. If you are making a 64-kbps connection, proceed to Step 15. If you are making a 128-kbps connection, follow steps 10 through 14, and then continue with Step 15.



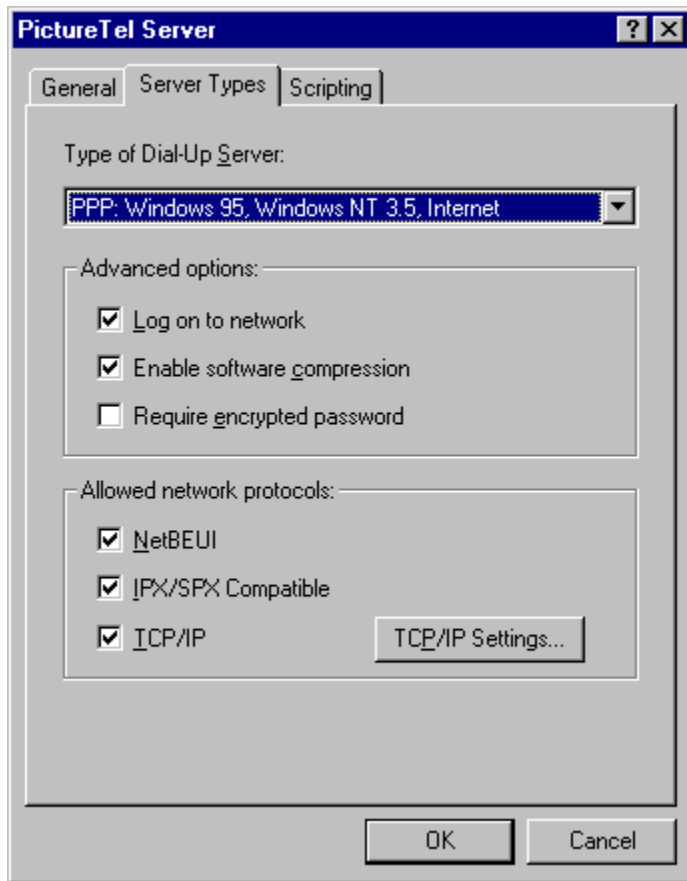
10. Click the Settings button from the General sheet.
The Set Additional Devices dialog box appears.



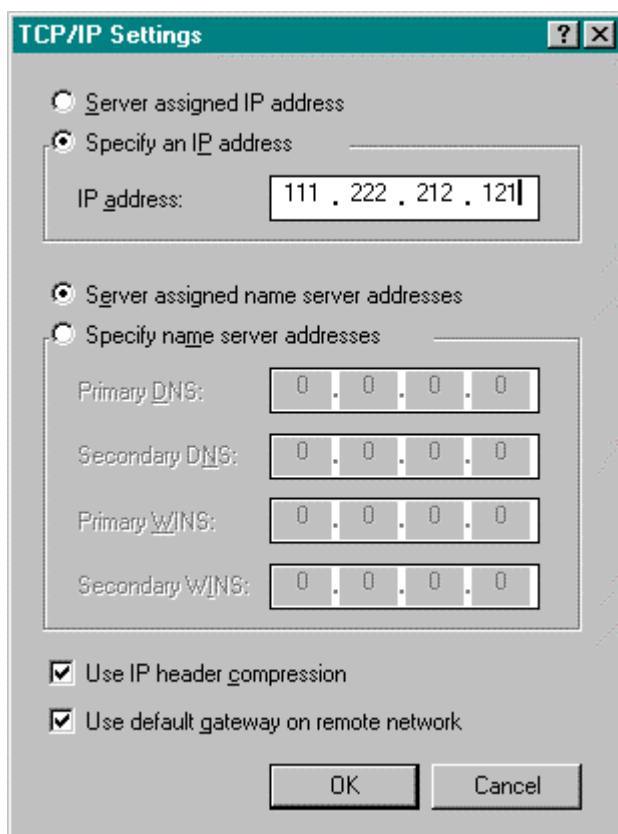
11. Click the Use additional devices option button.
12. Click the Add button to add a second channel.
The Edit Extra Devices dialog box appears.



13. Select a different channel from the one you selected in Step 5 and click OK. For example, if you selected Live200 ISDN Channel 1 in Step 5, you should now select Live200 ISDN Channel 2.
The Set Additional Devices dialog box appears.
14. Click OK from the Set Additional Devices dialog box.
15. Click the Server Types tab from your connection properties window. Your Internet Service Provider can give you the correct information for this dialog box.
The following screen shows an example, your choices might be different.



16. Click PPP from the Type of Dial-Up server list.
 17. Turn off the NetBEUI and IPX/SPX compatible check boxes in the Allowed network protocols section.
 18. Click the TCP/IP Settings button.
- The TCP/IP Settings dialog box appears.



19. Click **Server assigned IP address** if your Internet Service Provider assigned you an IP address.
or
Click **Specify an IP address** and type the IP address of your computer.
 20. Click **Server assigned name server addresses** if your Internet Service Provider assigned you a server address
or
Click **Specify name server addresses** and type the DNS and WINS numbers.
 21. Click OK from the Server Types sheet.
-

Dialing into the Host

To dial into a host:

1. Double-click the connection icon you created.
2. Type your name and password in the Connect To dialog box.
A status box appears while the system is connecting.

When the connection is made, the Dial-Up Networking window appears and a network icon appears in the Windows 95 task bar. You can check on the status of the connection and disconnect from the host by double-clicking the network icon in the Windows 95 task bar.



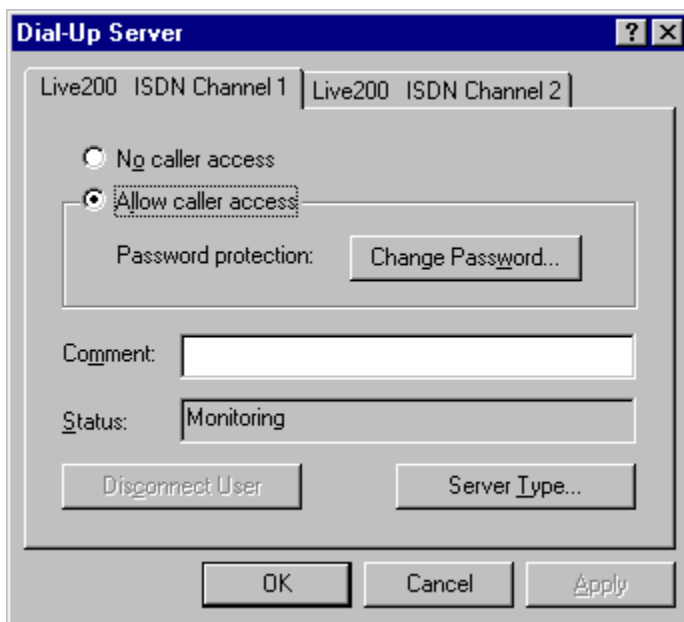
Configuring the Live200 as a Dial-Up Host

You can dial into your Live200 from a remote site by configuring the Live200 as a Windows 95 host. This lets you access all of the disk drives, printers, and other network resources to which your Live200 has access. For example, if you are working at home, you can dial into your Live200 and check your electronic mail messages, edit and print files, and access other servers to which your Live200 is connected.

To configure the Live200 as a Windows 95 host:

1. Double-click My Computer on the Windows 95 desktop.
2. Double-click Dial-Up Networking.
3. Click Dial-Up Server from the Connections menu in the Dial-Up Networking window.

The Dial-Up Server window appears.



4. Click Allow caller access from the Live200 ISDN Channel 1 sheet and the Live200 ISDN Channel 2 sheet (if you are using two channels).
5. Click OK.