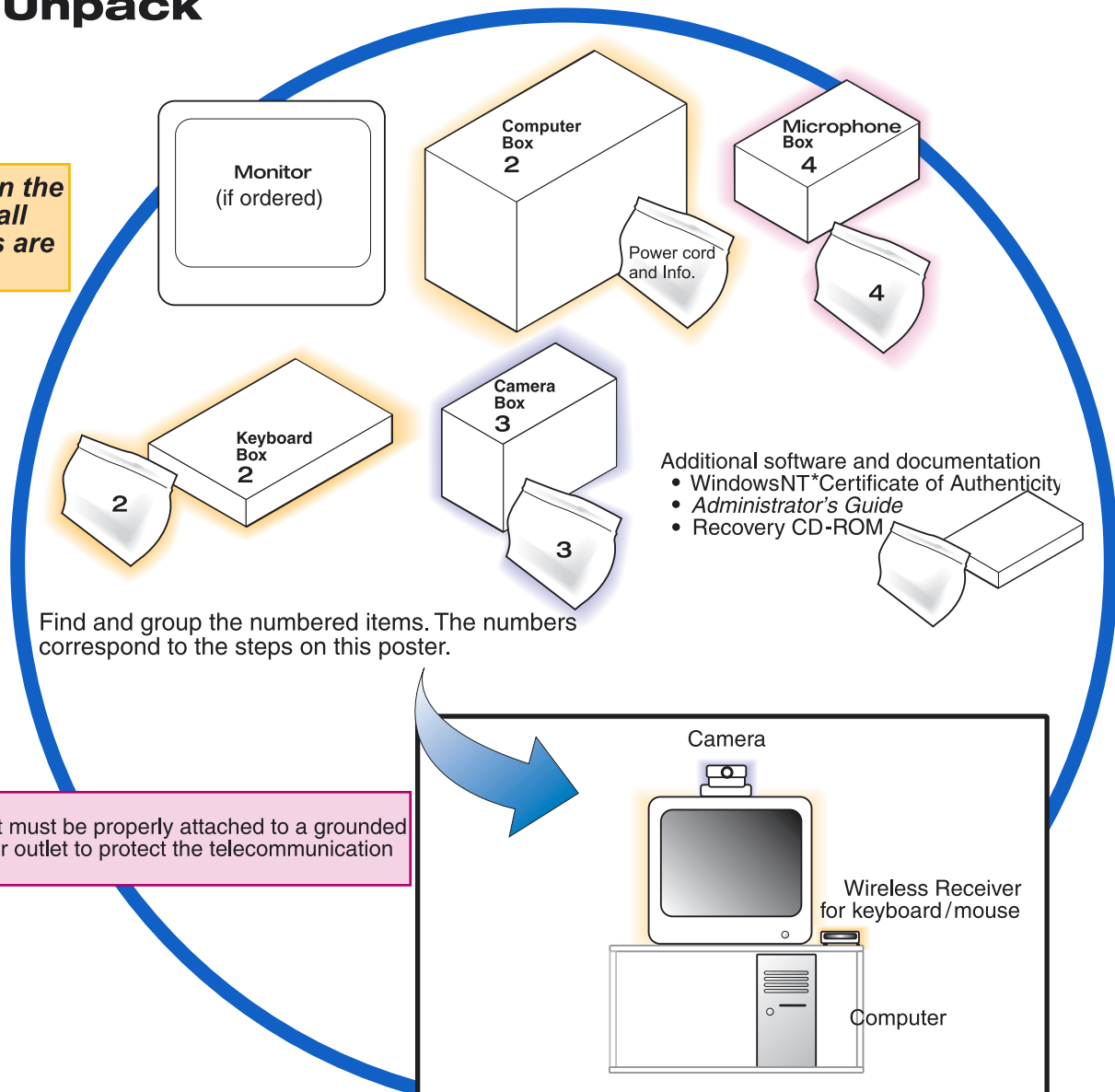


# Setting up the Intel TeamStation™ System

# 1

## Unpack

**Don't turn on the power until all components are connected!**



### WARNING

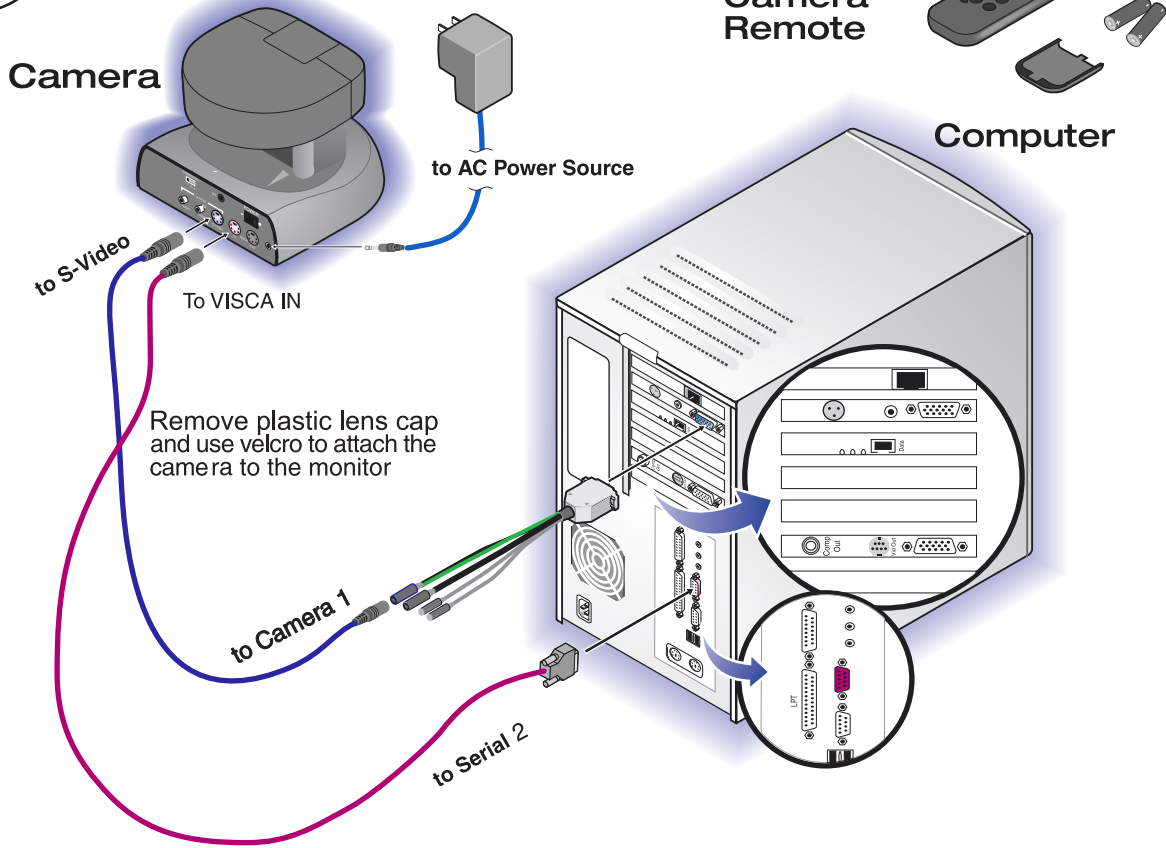
This equipment must be properly attached to a grounded (earthed) power outlet to protect the telecommunication network.

This diagram shows the suggested arrangement for the system components. For more information about how to place the system, see the *Administrator's Guide*.



# 3

## Set up the Camera



# 4

## Set up the Audio

### Microphone

Place away from the audio speaker, preferably in the middle of the conference room.

### Computer

### Monitor



AC INPUT

### RGB Audio IN

Audio IN R  
Audio IN L

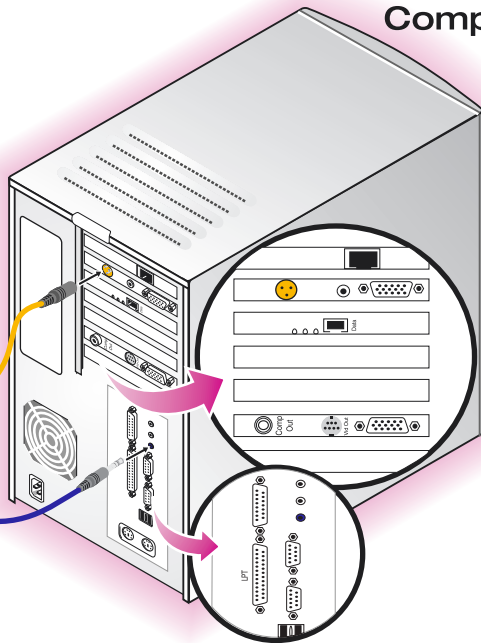
VGA / RGB IN

to  
Monitor  
RGB Audio IN



to Audio in

To line out



After installation is complete, there will be extra cables for use with optional peripherals; store for future use.

# 5

## Gather ISDN Information

You'll Need to Know<sup>†</sup>:

- ISDN PROTOCOL AND SWITCH TYPE

- AT&T 5ESS CUSTOM
- AT&T G3 PBX CUSTOM
- EURO-ISDN DSS-1
- NATIONAL ISDN 1 (NI-1)
- NORTEL DMS-100 CUSTOM
- NTT INS64 (Japan)
- TPH 1962 (Australia)
- ETSI: DSS1 for New Zealand

- ISDN LINE

PHONE NUMBER(S):

#1

SPID

TYPE (VOICE/DATA/DATA-VOICE)

#2

SPID

TYPE (VOICE/DATA/DATA-VOICE)

<sup>†</sup>Information about your ISDN connections is available from your ISDN service provider.

# 6

## Power On & Configure Windows NT\*

- 6.1
- Turn on the power in this order: monitor, computer and camera.
  - As the system starts, various initialization and configuration screens will appear briefly. During this process, the system will automatically restart and more initialization and configuration screens will appear. This process takes a few minutes.
  - The software license agreement screen appears; make the appropriate selection.
  - Setup and initialization screens appear.



- 6.2
- The Windows NT Setup Wizard starts. Click Next.
  - Name and Organization. Enter the name and organization. Click Next.
  - Registration. Enter the OEM number from the Certificate of Authenticity located with the Windows NT manual. Click Next.
  - Administration Account. Enter and confirm a password for the system administrator account. Click Next.
  - Windows NT Networking. The system automatically installs and configures the network connection. Click Next.
  - Initialization screens appear briefly.

- Restart. You are asked if you want to restart the system at this time. Click Restart.



- 6.3
- After the system boots, a log-on box appears; press Ctrl+Alt+Del to log on.
  - Log on as administrator.
  - The Welcome to Windows NT screen appears. Click Close.



# 7

## Configure the Intel TeamStation™ System

- Locate the TeamStation System AdminTools icon on the desktop:
- Double-click the icon to start the tool.
- Enter the appropriate information on the following screens.



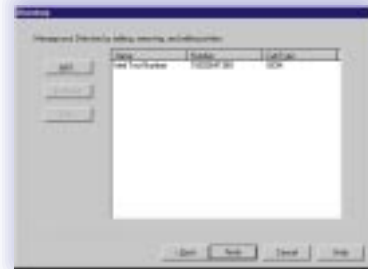
AdminTools



- TCP/IP must be set up separately before it can be selected here. For instructions, see the *Administrator's Guide*.



- Use information from Step 5.



- Enter numbers you know you'll be using with the TeamStation System.
- Click Finish. You are asked if you want to restart. Click Yes to restart.

8

## Make a Video Call

- During restart, the default NT mode (non-VGA workstation) is selected automatically.
- After the system boots, press Ctrl+Alt+Del to log on.
- The TeamStation System starts and the following screen appears:



To make your first video call, click Video Call. Dial:

**(503) 264-1369**

Be sure to add any prefixes required by your telephone system.