



MGC+ 50/100 Installation & Configuration Guide

General Safety Precautions

Follow these rules to ensure general safety:

- Keep the area around the Polycom MGC+ unit clean, free of clutter and well ventilated.
- When lifting the MGC+50/100, two people at either end should lift slowly with their feet spread out to distribute the weight. Always keep your back straight and lift with your legs.
- Decide on a suitable location for the equipment rack that will hold the MGC+ unit and is near a grounded power outlet.
- Ensure that the leveling jacks on the rack's bottom are fully extended to the floor with the full rack's weight resting on them.
- Stabilizers should be attached to a single rack . In multiple rack installations, the racks should be coupled together. Always make sure the rack is stable before extending a component from the rack.
- Use a regulating uninterruptable power supply (UPS) to protect the MGC+ unit from power surges and voltage spikes, and to keep it operating in case of a power failure.

Preparations

Obtain the following information from your network administrator:

- MGC+ unit, Subnet Mask and Default Gateway IP addresses
- Gatekeeper IP address
- DNS IP address, if applicable
- SIP server IP address, if applicable

Field	Description
SIP	Select this check box to indicate that SIP participants can connect to the MCU using this service. Then select: <ul style="list-style-type: none">• Specify - to manually define the SIP server.• Auto - to automatically detect the SIP server's IP address if a DHCP or if a DNS Server is defined.
<i>SIP Server IP Address or Name</i>	If SIP-Specify is selected, and a DHCP is not used, enter either the IP address of the preferred SIP server or its host name (if a DNS server is used).
<i>Domain Name or IP Address</i>	Enter the domain name to identify the SIP server in the domain according to the host part in the dialed string.

3 Click OK.

A confirmation message is displayed. Click OK.

Conferencing Entities

The MGC+ unit is shipped with two Entry Queues and eight Meeting Rooms. Different Entry Queues and Meeting Rooms are created according to conference line rate and video session type. The Entry Queues and Meeting Rooms are set to line rate of 384 Kbps.

- Entry Queue **CP** whose Numeric ID is **1111**, and Video Session type is **Continuous Presence**, is used to access Meeting Rooms **1000**, **2000**, **3000** and **4000**.
- Entry Queue **VSW** whose Numeric ID is **2222**, and Video Session type is **Video Switching**, is used to access Meeting Rooms **5000**, **6000**, **7000** and **8000**.

Meeting Room names and Numeric IDs are identical. For example, Meeting Room 3000 has the Numeric ID 3000.

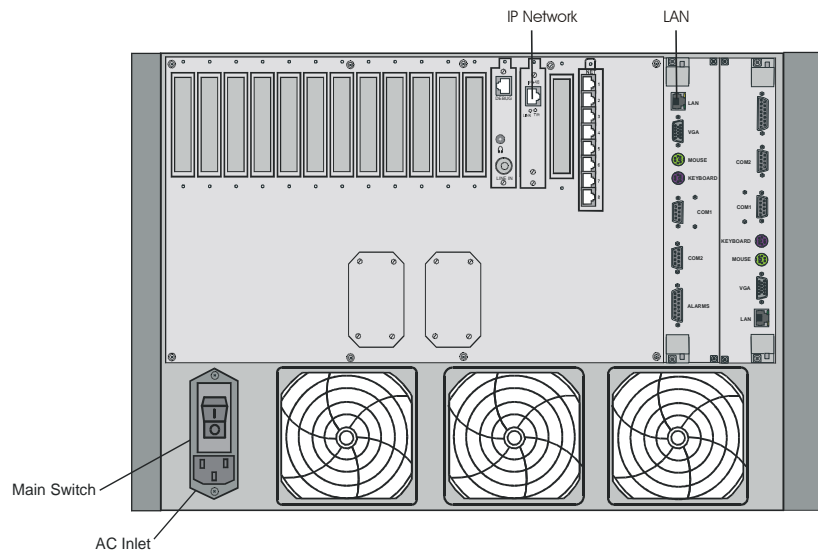
Meeting Rooms 1000, 2000, 3000 and 4000 are set to Continuous Presence mode. Meeting Rooms 5000, 6000, 7000 and 8000 are set to Video Switching mode.



www.polycom.com

Unpacking and Installing the MGC+50/100

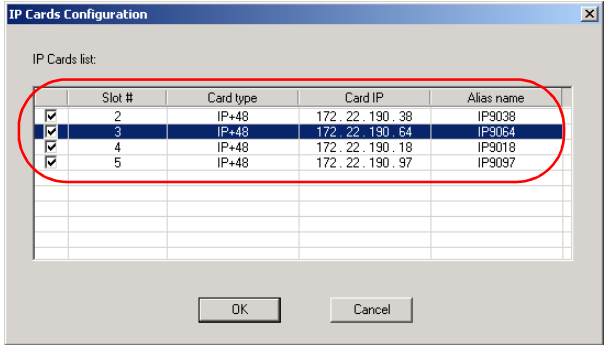
- 1 Place the MGC+ unit on a stable flat surface in the selected location.
- 2 Release the clasp locks at the bottom, and lift the MGC+ package top cover.
- 3 Lift the MGC+ unit and place it on the required flat surface.
If you are rack mounting the MGC+ unit, allow a minimum clearance of 3" above the unit.
- 4 To mount the MGC+100 in a 23" rack, place the MCU in the rack and while supporting it, screw the mounting brackets to the rack securing it with bolts and self-locking nuts (which you provide).
- 5 To connect to the power source, insert the power cable into the power connector on the rear panel of the MGC+ unit and insert the power cable into the power source socket.
- 6 Turn on the power switch.



The connections for the MGC+50 and the MGC+100 are similar, therefore only the MGC+100 is shown in the figure above.


Field	Description
<i>Default Router</i>	If DHCP is not used, enter the IP address of the default router.
DNS	Select this check box to indicate that a DNS server is used in the network. Then select one of the following: <ul style="list-style-type: none"> • Specify - to enter the IP address of the DNS server. • Auto - to automatically detect the primary DNS IP address, provided the DNS Server is defined in the DHCP server and the <i>DHCP - obtain IP Address automatically</i> check box was selected.
<i>DNS Server IP Address</i>	If <i>DNS-Specify</i> was selected, enter the IP address of the primary DNS server.
<i>Local Domain Name</i>	Enter the domain name where the MCU is installed, for example, polycom.com.
H.323	Select this check box to indicate that H.323 participants can connect to the MCU using this service.
<i>Gatekeeper</i>	Select this check box when a gatekeeper is used.
<i>Gatekeeper IP Address or Name</i>	Enter either the gatekeeper's host name (if the DNS server is used), or IP address.
<i>Prefix</i>	Enter a number to be used by H.323 participants to dial to the MCU as part of the dial-in string. Enter 789 to use the default Entry Queues and Meeting Rooms shipped with the MGC+ unit without modifying their properties. When PathNavigator is used, this prefix automatically registers with the gatekeeper. When another gatekeeper is used, this prefix usually must also be defined in the gatekeeper.

Define or modify the following parameters:

Field	Description
<i>IP Service Name</i>	Enter a name using up to 20 characters, or use the default name (IP Default Service).
<i>Obtain IP Address automatically (DHCP)</i>	Select this check box to use a DHCP server for automatic assignment and tracking of IP addresses to the conference devices.
All Spans Configuration	Select this check box to indicate that a LAN span is connected to all IP+ cards in the MCU.
<i>Cards Configuration</i>	<p>Click this button to display the automatically detected IP+ cards installed on the MCU, listing their slot number, IP address and Alias (if known).</p> <ul style="list-style-type: none"> When a DHCP server is used and the <i>Obtain IP Address automatically (DHCP)</i> check box is selected, the IP address of the card appears as 0.0.0.0.  <p>To change the IP Address of the card and add an Alias, double click on the card and then change the <i>IP address</i>, and add the card's <i>Alias</i>. Click OK.</p>
<i>Subnet Mask</i>	If DHCP is not used, enter the subnet mask of the MCU's IP+ card.

Initial MGC+ Control Unit IP Configuration

The system is shipped with a default IP address: 129.254.4.8. When the MGC+ is installed for the first time, you must change the default IP address of the MCU.

- 1 Insert the Compact Flash disk into the Compact Flash adaptor (supplied with the MGC+ accessory kit).
 - 2 Using a text editor application, open the LAN.CFG file stored on the Compact flash card.
 - 3 In the LAN.CFG file, define the MCU IP address, the subnet Mask and Default gateway parameters as allocated by the network administrator. Make sure that there are no extra spaces at the end of each line
 - 4 Save the LAN.CFG file.
 - 5 Use the Microsoft *Unplug or Eject Hardware* procedure prior to removing the Flash disk. Failure to stop the hardware properly, can result in a corrupt Compact Flash disk.
 - 6 Remove the Compact Flash Memory disk from the PC and insert it into the MGC+ Control Module Compact Flash slot.
 - 7 Press the **Reset** button on the MGC+. After the automatic default time-out (15 seconds) the MGC+ IP settings are changed. The *Flash Memory* LED must be active and flashing.
 - 8 Press the **Eject** button when the *Flash Memory* LED no longer flashes.
- 

Do not press the *Eject* button while the *Flash Memory* LED is flashing.
- 9 Remove the Compact Flash card from the MGC+ Control Module compact flash slot
 - 10 Press the **Reset** button on the MGC+ to reset the MCU.

Connecting the MCU to the Network

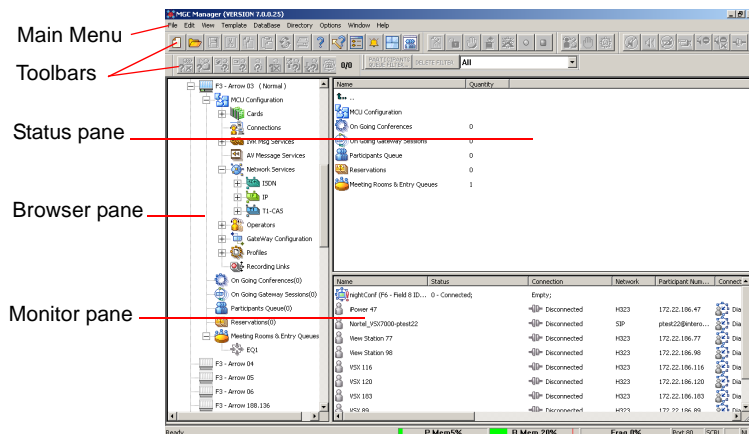
- 1 To connect the MGC+ unit to your site's network, connect network cable to the LAN connector on the rear I/O panel of the MGC+ Control Module and to the network.
- 2 To connect an IP card to the IP network, connect the 8-pin RJ-45 connector of the LAN network cable to the LAN RJ-45 jack on the IP IO panel of each IP card on the rear panel of the MGC+ unit.

Installing the MGC Manager Application

- 1 Insert the software CD into the CD drive.
- 2 On the *Start* menu, click **Run**, and then enter `D:\SETUP` (where D is the name of the CD drive). Click **OK**. The installation wizard opens.
- 3 Follow the on-screen instructions.

Starting the MGC Manager and Defining the MCU

- 1 On the *Start - Programs* menu, select **MGC Manager ver 7.5**. The *MGC Manager* main window opens.



- 2 In the *Browser* pane, right-click the *MCUs Network* icon, and then click **New MCU**.



The *Add MCU* dialog box opens.

- 3 In the *Name* box, enter the name of the MCU using a name that clearly identifies the MCU.
- 4 In the *IP Address* box, enter the IP Address of the MCU CU using the IP address that was configured during the Initial IP Configuration.
- 5 Click **OK**.
A new icon with the specified MCU name is added to the *MCUs Network* in the *Browser* pane.

Connecting to the MCU

- 1 Double-click the *MCU* icon. The *Logon* dialog box opens.
- 2 Enter your *Login Name* and *Password*, and then click **OK**. The default *Login* and *Password* are both POLYCOM.

Configuring the IP Network Service

The IP Network Service defines the properties of the IP network used for connecting IP endpoints to the MCU.

To define the default IP Network Service:

The *IP Configuration* dialog box automatically opens when the system detects that the default network settings were not modified to your site's configuration.